



The Yukon Electrical Company Limited
An **ATCO** Company

October 31, 2013

Yukon Utilities Board
Box 31728
Whitehorse, YT Y1A 6L3

Attention: Mr. Bruce McLennan
Board Chairman

Dear Sir:

**RE: Yukon Electrical Company Limited (“Yukon Electrical”)
Updates to 2013-2015 General Rate Application**

In preparing for the upcoming hearing, Yukon Electrical has uncovered certain areas in its Application that require updating to ensure that the Board has the best and most recent information available to it on the record. As detailed below, the following items have resulted in changes to Yukon Electrical's applied for 2013-2015 revenue requirements:

- Reduced Residential and Commercial Sales in 2013, 2014 and 2015 due to lower than forecast Use Per Customer (UPC);
 - Reduced O&M expenses and delay in the timing of capital due to a delay in the implementation of the Watson Lake Bi-Fuel project from 2013 to 2014;
 - Reduced O&M expenses and capital due to a correction to the timing of FTE additions (CW-YECL-9);
 - Reduced O&M expenses due to a correction in DSM costs (CW-YECL-27(a)); and
 - Reduced return due to a correction in 2014 to working capital related to income taxes receivable/payable (WL-YECL-20).
-

The updated tariffs, rate impacts, capital expenditures and capital additions are as follows:

	2013	2014	2015
		(\$000)	
Yukon Electrical Tariffs	52,698	56,257	58,918
Cumulative Increase over Existing Rate	3,842	5,954	7,677
Cumulative Rate Increase %	6.6%	9.7%	12.3%
Year Over Year Rate Increase %	6.6%	2.9%	2.4%
Capital Expenditures	19,894	22,660	20,696
Capital Additions to Rate Base	21,574	23,260	20,696

This update also includes a number of small corrections to the record that have been noted as part of the application process.

1. Application, Section 1, Schedule 1.1

a. Sales Forecast Update

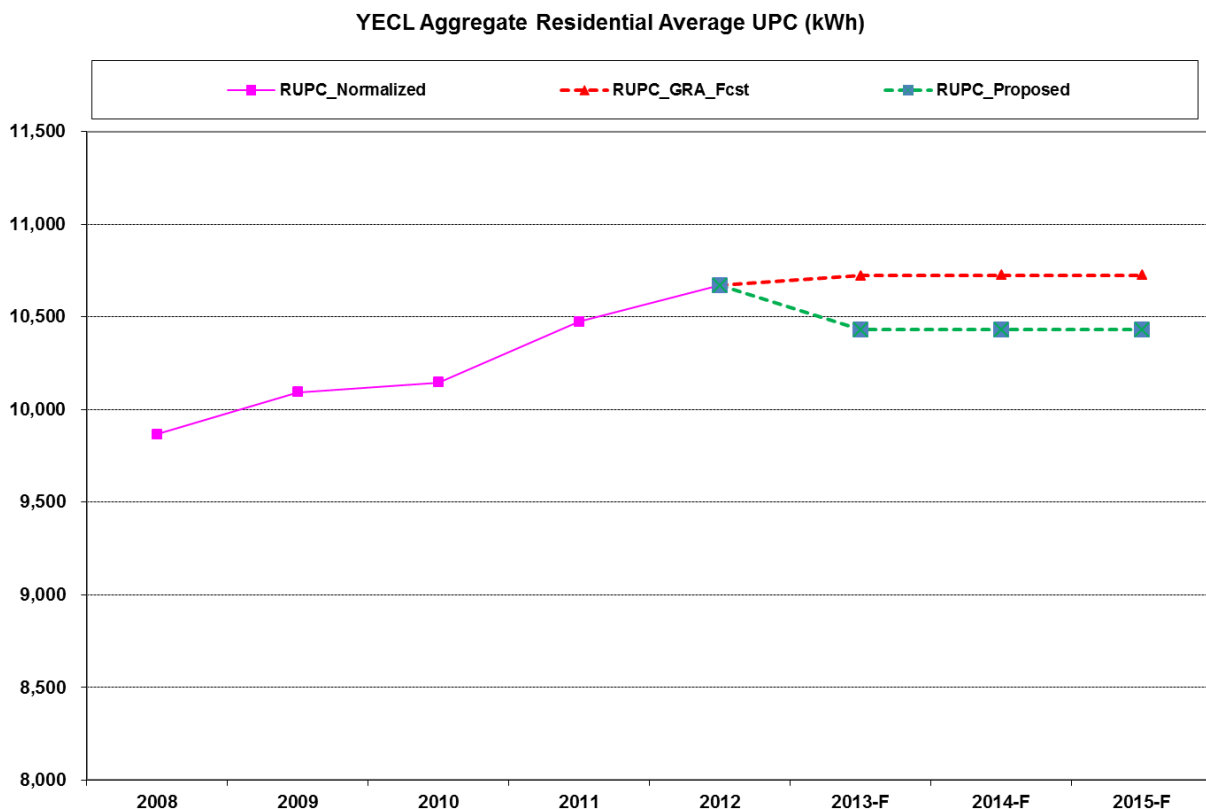
Yukon Electrical has determined that its 2013 residential and commercial sales up to the end of September 2013 are 3.5 GWh and 4.9 GWh lower than applied for as part of its 2013-2015 General Rate Application. The decreases are due to lower use per customer offset by small increases in the number of customers. Based on this latest and best information available, Yukon Electrical is updating its 2013-2015 residential and commercial forecast to better reflect what has happened in 2013 year-to-date and what can be reasonably be expected to occur for 2014 and 2015. The impact of the update on residential sales is a reduction to the forecast of 3.8 GWh for 2013, 3.8 GWh for 2014 and 3.9 GWh for 2015. For commercial sales, the impact of the update is a reduction to the forecast of 4.0 GWh for 2013, 4.1 GWh for 2014 and 4.2 GWh for 2015. Please refer to Attachment 1 for supporting details on the above and Attachment 2 for revised Schedules 1.1, 2.1 and 3.1 that have been affected by this update.

Residential Sales

In the first 9 months of 2013, actual residential energy sales have been 3.5 GWh (on a normalized basis) lower than the filed forecast for the same period (please refer to Attachment 1). In addition, customer additions have increased by 33 year-to-date over that forecast. Yukon Electrical is now forecasting 2013 residential sales will come in at 148.0 GWh as compared to the original filed forecast sales of 151.8 GWh. Yukon Electrical attributes this over forecast to the UPC forecasting methodology it employed in the original Application; namely, Yukon Electrical used the 2012 normalized UPC for Whitehorse as the baseline and increased it by the

most recent 3-year average normalized UPC growth rate of 0.7%. The use of a 2012 normalized UPC for Whitehorse as the baseline was a departure from the 2008-2009 GRA approach of using a three year average UPC and was predicated on the assumption that 2012 had set a new UPC bar and that it was the latest and best information to use for the forecast. As 2012 actuals have shown, however, this approach has produced a residential sales forecast that is clearly too high. Given the above, Yukon Electrical is updating its residential sales forecast to reflect what has happened through to September 2013. The 2013 forecast is now based on the aggregate three year (2010-2012) average normalized UPC and, in addition, reflects the actual increase in customer additions of 33. Similar to what was described in Section 2 of the original Application, Yukon Electrical will continue to hold the updated 2013 UPC forecast for 2014 and 2015 in consideration of the offsetting impacts of the DSM program. Graph 1 below illustrates the effect of the update to the UPC.

Graph 1: Residential UPC

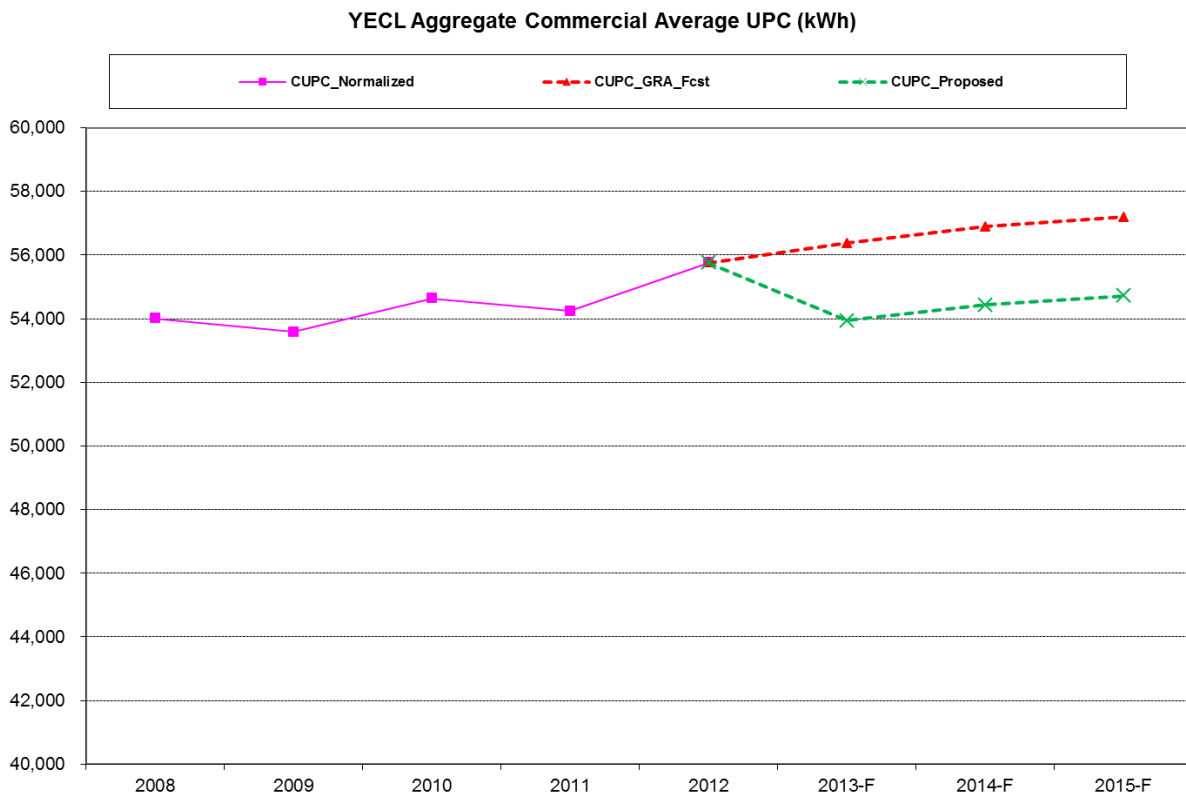


In conclusion, based on the above detailed latest and best information available, Yukon Electrical is updating its residential sales forecast to 148 GWh for 2013, 150.5 GWh in 2014 and 153.1 GWh in 2015. Please refer to Attachment 1 for a comparison of the original and updated residential sales forecast.

Commercial Sales

In the first 9 months of 2013, actual commercial energy sales have been 4.9 GWh (on a normalized basis) lower than forecast for the same period (please refer to Attachment 1). In addition, customer additions have increased by 55 year-to-date over that forecast. Yukon Electrical is now forecasting full year 2013 commercial sales will be 157.6 GWh as compared to the original filed forecast of 162.5 GWh. Similar to the residential class, Yukon Electrical attributes this over forecast to its forecasting methodology; namely, Yukon Electrical used the 2012 normalized UPC for Whitehorse as the baseline from which to add specific customer additions with loads greater than 100 kW. As 2013 September year-to-date actuals have shown, however, this approach has produced a commercial sales forecast that is clearly too high. Given the above, Yukon Electrical is updating its commercial energy forecast to bring it in line with the projected 2013 energy sales as well as to reflect the increase in actual customer additions of 55 year-to-date. Similar to what was described in Section 2 of the original Application, Yukon Electrical is increasing its UPC in 2014 and 2015 to reflect the addition of specific customers greater than 100 kW. Graph 2 below illustrates the effect of the update to the UPC.

Graph 2: Commercial UPC



In conclusion, based on the above detailed latest and best information available, Yukon Electrical is updating its commercial sales to 157.6 GWh for 2013, 161.0 GWh in 2014 and 164.3 GWh in 2015. Please refer to Attachment 1 for a comparison of the original and updated commercial sales forecast.

b. Watson Lake Bi Fuel Project (Business Case #6)

The permitting and licencing process in respect of the Watson Lake Bi-Fuel Project has taken longer than anticipated. As a result, Phase I of the project, which consists of (i) the conversion of Watson Lake Unit #5 to bi-fuel operation; and (ii) infrastructure from the natural gas supply to the unit, which was forecast to be completed in 2013, has been delayed until 2014. Consequently, the \$363,000 in capital costs for Phase I forecast to be incurred in 2013 have been moved to 2014. The storage and vapourization charges from ATCO Gas included in Operations and Maintenance expenses, which were forecast to begin in September 2013, are now forecast to begin in September 2014. As well, the deferred charges associated with the project are now being amortized beginning in 2014, rather than in 2013.

c. Other Items Impacting Revenue Requirement

In addition, while preparing responses to Information Requests, Yukon Electrical identified the following required corrections in the calculation of its revenue requirement as filed for 2013-2015:

CW-YECL-9

Yukon Electrical determined that it inadvertently forecast all FTE additions as of January 1 for each respective year. A more reasonable forecast is to have these additions forecast to occur mid-year. Accordingly, Yukon Electrical has updated the revenue requirement for each year to reflect all additions as occurring mid-year.

CW-YECL-27(a)

It is Yukon Electrical's intention to capitalize and amortize over 10 years all costs associated with the DSM program. However, it was discovered that some costs had inadvertently been included in both Operations and Maintenance expenses and Capital. Accordingly, Yukon Electrical has removed all DSM costs from O&M expenses.

WL-YECL-20

Yukon Electrical noted that it inadvertently reversed the sign for 2014 Income Taxes receivable (payable). The receivable balance of \$704 should have been a payable. This change has been reflected in the updated revenue requirement.

Please refer to Attachment 2 for a summary of the impact on the revenue requirement for each test year of each of the above items.

2. Application, Section 1, Page 1-8

Included in the costs of the Demand Side Management Program outlined in the response to Information Request YUB-YECL-24(b) Attachment 1 are the following two positions:

Customer Engagement Officer (2014) This position will carry out the direct engagement with customers according to the DSM plan, support participants with transactions, coordinate and engage during DSM events, complete key performance tracking, assist in tracking reimbursements, investigate discrepancies, and assist the DSM Coordinator with DSM program delivery.

Back Office Coordinator (2014) This position will handle all the applications and completions of applications in regards to the DSM programs, input data into the tracking system and coordinate with the billing department for on-bill incentives. This position will also provide support and information for the Evaluation, Verification and Measurement portion of the program.

These positions were inadvertently excluded from the FTE table included on page 1-8 of the Application. The updated complement, including these positions, is as follows:

2015 Forecast Ending Complement per Application	73.39
Customer Engagement Office (2014)	1.00
Back Office Coordinator (2014)	1.00
Updated 2015 Forecast Ending Complement	<u>75.39</u>

3. Application, Section 1, Attachment 1

The two DSM positions outlined above were also not included in the organizational chart in Section 1 of the Application. Please refer to Attachment 3 for an updated version of the organization chart including the Customer Engagement Officer and Back Office Coordinator positions.

4. Application, Section 2, page 2-2

Footnotes 1 and 2 beneath Table 2 on page 2-2 should read "Schedule 2.1", not "Schedule 1.2."

5. Application, Section 2, page 2-7

Line 2 of page 2-7 should read "2010 to 2015" instead of "2005 to 2010".

6. CW-YECL-3

Yukon Electrical inadvertently included an incorrect version of the attachment in response to this Information Request. Please refer to Attachment 4 for the correct version.

7. UCG-YECL-5(b)

Yukon Electrical's response to UCG-YEC-5(b) was to provide detailed residential bill calculations for 1,000, 1,200 and 1,400 kWh of consumption. Yukon Electrical inadvertently provided the 1,200 kWh scenario twice, resulting in the 1,400 kWh scenario not being provided. Please refer to Attachment 5 for the corrected response including 1,400 kWh of consumption.

8. UCG-YECL-8(e)

Yukon Electrical's response to this Information Request provided the forecast for electricity sales to Whitehorse Copper Tailings (WHCT) for 2013, 2014 and 2015. Updated information from the customer indicates that they have had continued delays and will not begin construction or production in 2013. WHCT is now hoping to build in late winter or early spring of 2014, which would require Yukon Electrical to provide construction power, with full electrical supply required for production required two to three months later.

9. YEC-YECL-2(a)

The community of Pelly Crossing became part of the Yukon Interconnected System (YIS) in December 2008. In its response to YEC-YECL-2(a), Yukon Electrical inadvertently excluded all Pelly Crossing actual sales from the Small Diesel Rate Zone and included those sales in the Hydro Rate Zone totals rather than including 11 months of actual sales in the Small Diesel Rate Zone and 1 month in the Hydro Rate Zone. The corrected response is included as Attachment 6.

10. YUB-YECL-5(a)

Yukon Electrical stated in its response to this Information Request that its required defined benefit (DB) pension funding for 2013 is \$956,000 for the current service cost and special payments.

Further to the above, Yukon Electrical is required to make additional deficiency payments on any lump sum payment made from the pension plan in respect of a DB member who elects to transfer out a lump sum amount. This situation can arise on termination, death or marriage breakdown.

In 2013, Yukon Electrical has had two employees transfer lump sum amounts out, resulting in a required transfer deficiency payment of \$84,755. Yukon Electrical's DB pension funding for 2013 has therefore increased to \$1,040,755.

11. YUB-YECL-42(c)

As a result of delays in receiving approvals for the Watson Lake Bi-Fuel Project to proceed, the updated forecast of project costs to convert all units in the Watson Lake facility to possess bi-fuel operational capabilities from that stated in Business Case #6 in the Application is as follows:

	<u>As filed</u>	<u>Updated</u>
<u>Phase 1:</u>		
Infrastructure from the NG supply to the unit and to convert Unit #5 to bi-fuel operation		
2012	90,000	90,000
2013	363,000	-
2014	-	363,000 (1)
Study costs including consulting costs for feasibility, surveying, engineering, and acquisition of required permits and licenses		
2013	222,000	222,000
<u>Phase 2:</u>		
Conversion of the remaining units to bi-fuel operation		
2014	372,000	372,000

(1) Costs for Phase I may increase based on preliminary tenders received as well as due to the requirements for emissions verification.

12. YUB-YECL-70(b)

Yukon Electrical's response to this Information request should have read "Yes, AMR meters are forecast in this line item for 2013." For communities included in the area that will have AMR installed, required meter replacements in 2013 are forecast to be completed using AMR compatible meters in preparation for the conversion to AMR in 2014 and 2015.

Yours truly,

Original Signed by:

James Grattan, CA
Director, Regulatory

The Yukon Electrical Company Limited
2013 - 2015 General Rate Application
2013 Utility Revenue Requirement
Omissions & Updates
(\$000s)

Revised Schedule 1.1

Line No.	Description	As Filed	Lower Sales	Bi-Fuel Project Delay	FTE Additions Mid-Year	DSM Costs in O&M	O&U Update
1	Revenues						
2	Retail Revenues	53,679	(682)	(144)	(67)	(88)	52,698
3	Other Revenue	1,277					1,277
4	Total Revenues	<u>54,956</u>	<u>(682)</u>	<u>(144)</u>	<u>(67)</u>	<u>(88)</u>	<u>53,975</u>
5							
6	Costs						
7	Purchase Power	25,630	(682)				24,948
8	Fuel	6,611					6,611
9	Operations and Maintenance	11,735		(88)	(66)	(88)	11,493
11	Property Taxes	257					257
12	Depreciation	6,570		(9)	(1)		6,560
13	Amortization of Contributions	(1,444)					(1,444)
14	Amortization of Deferred Charges & Credits	40		(22)			18
15	Return on Rate Base	5,308		(14)			5,294
16	Income Taxes	248		(11)			237
17	Total Costs	<u>54,956</u>	<u>(682)</u>	<u>(144)</u>	<u>(67)</u>	<u>(88)</u>	<u>53,975</u>

The Yukon Electrical Company Limited
2013 - 2015 General Rate Application
2014 Utility Revenue Requirement
Omissions & Updates
(\$000s)

Revised Schedule 1.1

Line No.	Description	As Filed	Lower Sales	Bi-Fuel Project Delay	FTE Additions Mid-Year	DSM Costs in O&M	Working Capital - Income Taxes	O&U Update
1	Revenues							
2	Retail Revenues	57,458	(699)	(199)	(150)	(90)	(63)	56,257
3	Other Revenue	1,250						1,250
4	Total Revenues	<u>58,707</u>	<u>(699)</u>	<u>(199)</u>	<u>(150)</u>	<u>(90)</u>	<u>(63)</u>	<u>57,506</u>
5								
6	Costs							
7	Purchase Power	26,472	(699)					25,773
8	Fuel	6,701						6,701
9	Operations and Maintenance	12,319		(176)	(135)	(90)		11,918
11	Property Taxes	265						265
12	Depreciation	7,509		(6)	(4)			7,499
13	Amortization of Contributions	(1,557)						(1,557)
14	Amortization of Deferred Charges & Credits	40						40
15	Return on Rate Base	6,255		(18)	(7)		(51)	6,179
16	Income Taxes	704		1	(4)		(12)	689
17	Total Costs	<u>58,707</u>	<u>(699)</u>	<u>(199)</u>	<u>(150)</u>	<u>(90)</u>	<u>(63)</u>	<u>57,506</u>

The Yukon Electrical Company Limited
2013 - 2015 General Rate Application
2015 Utility Revenue Requirement
Omissions & Updates
(\$000s)

Revised Schedule 1.1

Line No.	Description	As Filed	Lower Sales	Bi-Fuel Project Delay	FTE Additions Mid-Year	DSM Costs in O&M	O&U Update
1	Revenues						
2	Retail Revenues	59,912	(717)	4	(188)	(92)	58,918
3	Other Revenue	1,275					1,275
4	Total Revenues	<u>61,187</u>	<u>(717)</u>	<u>4</u>	<u>(188)</u>	<u>(92)</u>	<u>60,193</u>
5							
6	Costs						
7	Purchase Power	27,013	(717)				26,296
8	Fuel	6,704					6,704
9	Operations and Maintenance	12,507			(156)	(92)	12,259
11	Property Taxes	273					273
12	Depreciation	8,569			(8)		8,561
13	Amortization of Contributions	(1,749)					(1,749)
14	Amortization of Deferred Charges & Credits	39					39
15	Return on Rate Base	7,003			(16)		6,987
16	Income Taxes	828		4	(8)		824
17	Total Costs	<u>61,187</u>	<u>(717)</u>	<u>4</u>	<u>(188)</u>	<u>(92)</u>	<u>60,193</u>

The Yukon Electrical Company Limited
2013 - 2015 General Rate Application
Summary of Customers, Energy Sales and Revenue

Revised Schedule 2.1

Line No.	Description	Cross Ref.	Actual 2008	Actual 2009	Actual 2010	Actual 2011	Actual 2012	Test Period												
								2013		2014		2015		2008		2009				
								Existing	Proposed	Existing	Proposed	Existing	Proposed	Existing	Approved	Existing	Approved			
1	Residential																			
2	Customers (average during year)		12,715	12,943	13,169	13,482	13,857	14,192		14,433	14,680		12,693		12,908					
3	Sales in MWh		128,302	130,569	131,273	141,696	150,350	148,010		150,531	153,101		126,441		128,615					
4	MWh sales per customer		10.09	10.09	9.97	10.51	10.85	10.43		10.43	10.43		9.96		9.96					
5	Revenue (\$000s)		16,671	16,307	16,892	18,928	21,127	20,765		21,119	21,479		14,528		14,775					
6	Cents per kWh		12.99	12.49	12.87	13.36	14.05	14.03		14.03	14.03		11.49		11.49					
7	Commercial																			
8	Customers (average during year)		2,600	2,630	2,692	2,774	2,841	2,922		2,958	3,003		2,599		2,629					
9	Sales in MWh		141,704	142,076	145,776	150,591	159,562	157,606		161,011	164,329		144,701		145,365					
10	MWh sales per customer		54.50	54.02	54.15	54.29	56.16	53.94		54.43	54.72		55.67		55.23					
11	Revenue (\$000s)		20,818	20,368	21,821	23,374	26,057	25,753		26,349	26,914		18,918		19,004					
12	Cents per kWh		14.69	14.34	14.83	15.52	16.33	16.34		16.36	16.38		13.07		13.07					
13	Industrial																			
14	Customers (average during year)		-	-	-	-	-	-	1	-	1		-		-					
15	Sales in MWh		-	-	-	-	-	-	1,025	4,620	4,620		-		-					
16	MWh sales per customer		-	-	-	-	-	-	1,024.80	4,620.00	4,620.00		-		-					
17	Revenue (\$000s)		-	-	-	-	-	-	143	612	612		-		-					
18	Cents per kWh		-	-	-	-	-	-	13.91	13.26	13.26		-		-					
19	Street Lights																			
20	Sales in MWh		3,545	3,477	3,647	3,598	3,771	3,725		3,789	3,854		3,445		3,522					
21	Revenue (\$000s)		776	764	848	880	963	951		966	981		716		729					
22	Cents per kWh		21.89	21.97	23.25	24.46	25.53	25.54		25.49	25.45		20.78		20.70					
23	Private Lights																			
24	Sales in MWh		631	592	594	581	560	554		544	534		638		631					
25	Revenue (\$000s)		139	131	138	144	147	145		143	141		134		132					
26	Cents per kWh		22.03	22.13	23.23	24.71	26.20	26.23		26.27	26.31		20.95		20.95					
27	Total Company - Retail - Primary																			
28	Customers		15,315	15,573	15,861	16,256	16,698	17,114		17,391	17,683		15,293		15,537					
29	Sales in MWh		274,182	276,714	281,290	296,466	314,244	310,919		320,496	326,438		275,224		278,133					
30	Revenue (\$000s)		38,404	37,570	39,499	43,326	48,293	47,757		49,189	50,127		34,296		34,640					
31	Cents per kWh		14.01	13.58	14.04	14.61	15.37	15.36		15.35	15.36		12.46		12.45					
32	Secondary Sales																			
33	Customers (average during year)		22	21	21	14	2	-		-	-		22		23					
34	Sales in MWh		18,053	16,843	10,153	552	1,993	-		-	-		16,853		6,954					
35	MWh sales per customer		820.59	802.05	483.48	39.43	996.50	-		-	-		754.60		302.35					
36	Revenue (\$000s)		1,389	1,092	665	41	164	-		-	-		1,213		501					
37	Cents per kWh		7.69	6.48	6.55	7.43	8.23	-		-	-		7.20		7.20					
38	Wholesale Sales																			
39	Customers (average during year)		2	2	2	2	2	2		2	2		2		2					
40	Sales in MWh		412	360	365	427	338	338		338	338		489		489					
41	MWh sales per customer		206.00	180.00	182.50	213.50	169.12	169.12		169.12	169.12		244.41		244.41					
42	Revenue (\$000s)		41	37	38	38	28	28		28	28		52		52					
43	Cents per kWh		9.95	10.28	10.41	8.90	8.30	8.30		8.30	8.30		10.60		10.60					
44	Total Company																			
45	Customers		15,339	15,596	15,884	16,272	16,702	17,116		17,393	17,685		15,317		15,562					
46	Sales in MWh	S.3.2 L.2	292,647	293,917	291,808	297,445	316,575	311,257		320,834	326,776		292,565		285,576					
47	Revenue (\$000s)		39,834	38,699	40,202	43,405	48,486	47,785		49,217	50,155		35,561		35,193					
48	Cents per kWh		13.61	13.17	13.78	14.59	15.32	15.35		15.34	15.35		12.15		12.32					
49	Retail Revenues		39,834	38,699	40,202	43,405	48,486	47,785		49,217	50,155		35,561		35,193					
50	YEC Revenue Shortfall (Rider J)		4,990	4,026	4,353	2,479	1,437	-		-	-		5,120		5,172					
51	TOTAL REVENUES	S.1.1 L.2	44,824	42,725	44,555	45,884	49,923	47,785	52,698	49,217	56,257	50,155	58,918	40,681	44,021	40,365	44,437			
52	Rate Increase from Existing Rates								4,913	7,040	8,763		3,340		4,072					
53	Less: Impact of Higher Fuel Costs Recovered Through Rider F								(1,071)	(1,086)	(1,087)		(3,762)		(3,465)					
54	Net Rate Increase (\$000s)	L.52 - L.53							3,842	5,954	7,677		(422)		607					
55	% Rate Increase over Existing Rates																			
56	YECL Primary Retail Revenue	L.30							47,757	49,189	50,127		34,296		34,640					
57	YEC Firm Revenue								10,429	12,169	12,304		3,795		3,750					
58	Total YEC/YECL Retail Revenue Primary Rates (\$000s)	L.56 + L.57							58,186	61,358	62,431		38,090		38,391					
59	% Rate Increase Over Existing Rates	L.54 / L.58							6.6%	9.7%	12.3%		-1.1%		1.6%					

The Yukon Electrical Company Limited
2013 - 2015 General Rate Application
Schedule of Purchase Power

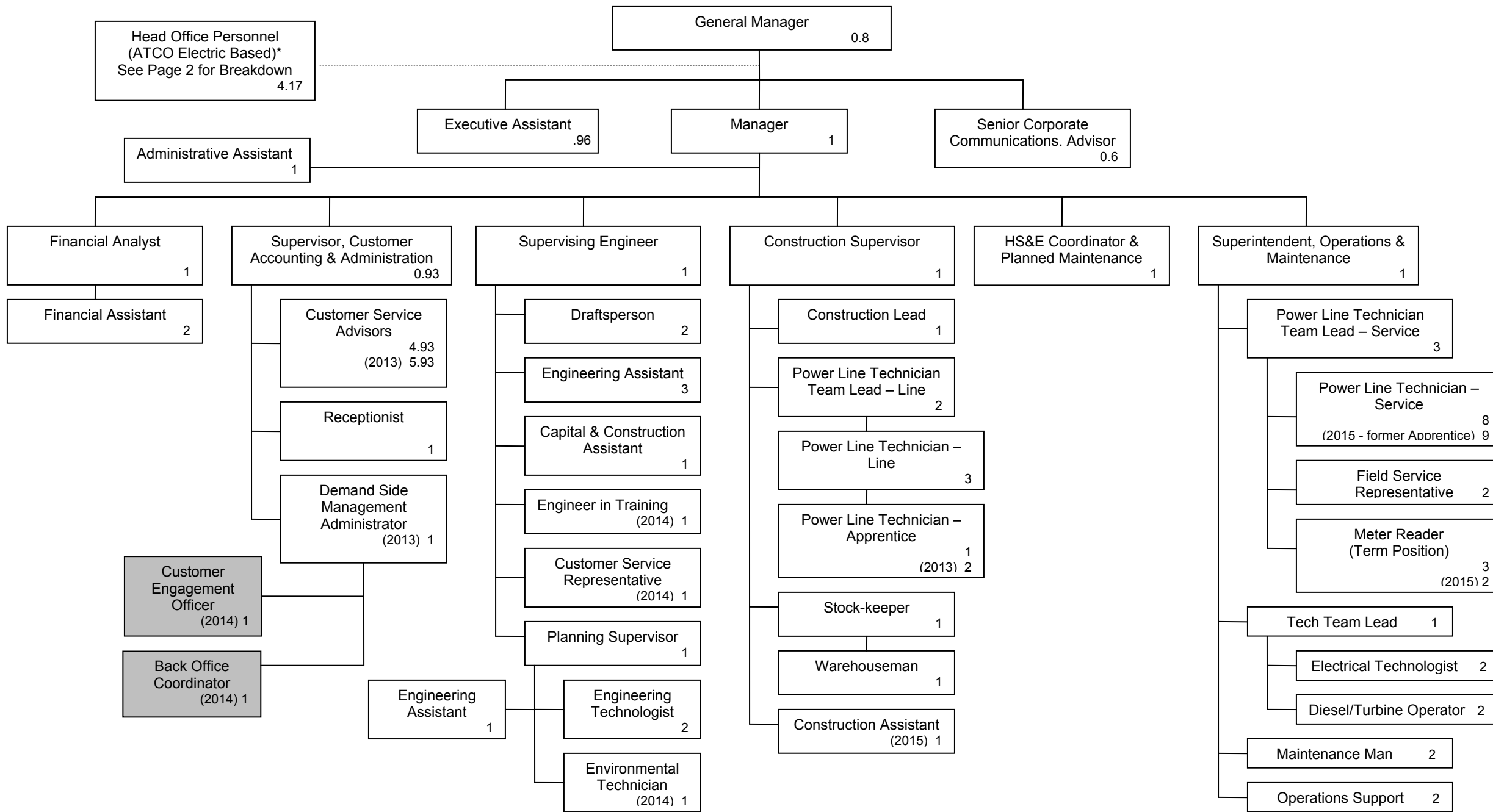
Revised Schedule 3.1

Line No.	Description	Cross Ref.	Actual 2008	Actual 2009	Actual 2010	Actual 2011	Actual 2012	Test Period			GRA Approved 2008	GRA Approved 2009
								2013	2014	2015		
1	Purchases (MWh)											
2	Primary Energy		263,820	267,230	276,345	290,541	310,264	305,100	310,591	316,891	263,765	267,747
3	Secondary Sales		18,053	16,843	10,153	552	1,993	-	-	-	16,853	6,954
4		S.3.2 L.10	281,873	284,073	286,498	291,093	312,257	305,100	310,591	316,891	280,618	274,701
5	Purchase Power Rates											
6	Primary Energy Charge (\$ per kWh)	Note 1	0.0684	0.0684	0.0684	0.0755	0.0830	0.0830	0.0830	0.0830	0.0684	0.0684
7	Secondary Sales (\$ per kWh)		0.066	0.054	0.054	0.072	0.0712	-	-	-	0.061	0.061
8	Shortfall Rider J										14.93%	14.93%
9	Purchase Power Expense (\$000s)											
10	Primary Energy Expense	L.2 x L.6	18,046	18,278	18,902	21,941	25,746	25,317	25,773	26,296	18,042	18,314
11	Secondary Energy Expense	L.3 x L.7	1,190	907	553	40	142	-	-	-	1,028	424
12	Shortfall Rider J	S.2.1 L.5.0	4,990	4,026	4,353	2,479	1,437	-	-	-	5,120	5,172
13	Less: Capitalized		(69)	-	(346)	(367)	(402)	(369)	-	-	(69)	(69)
14	Total Purchase Power Expense	S.1.1 L.7	24,157	23,211	23,462	24,093	26,923.07	24,948	25,773	26,295.61	24,121	23,841

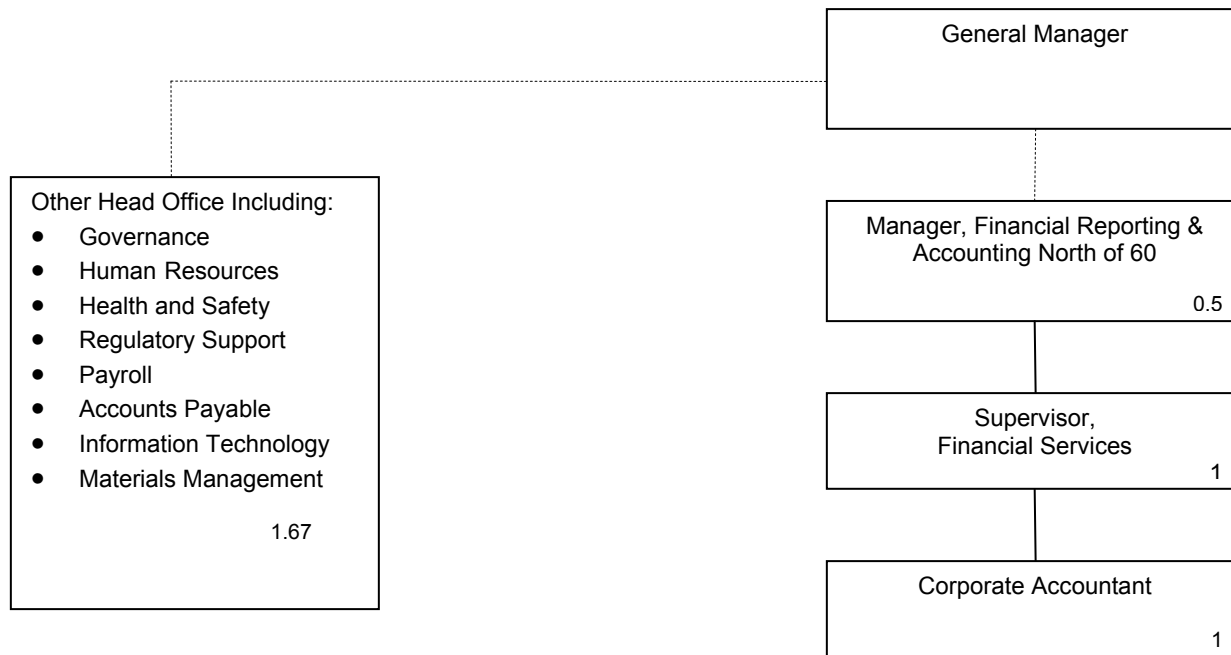
Note 1:

Rate changed in July 2011 from 0.0684 to 0.0830

Organizational Chart Yukon Electrical Company Limited 2013 – 2015



Organizational Chart Yukon Electrical Company Limited 2013 – 2015



**Yukon Electrical Company Limited
2013 - 2015 General Rate Application**

CW-YECL-3
REVISED

Table A: Summary of 2013 Commercial Forecast

	Base Customers	Base Billed Energy Fcst (MWh)	Specific Customer Adds (annual average)	Specific Customer Energy (MWh)	Total Customers	Billed Energy Fcst (MWh)	Billed to Earned Factor	Earned Energy Fcst (MWh)
Communities	2013	2013				TOTAL		TOTAL
1	2=Schedule 4	3=Schedule 4	4=Schedule 2	5=Schedule 2	6=2+4	7=3+5	8=Schedule 5	9=7x8
Carmacks	79	2,454			79	2,454	1.017	2,497
Carcross	62	1,241			62	1,241	1.013	1,257
Haines Junction	128	3,576			128	3,576	1.014	3,627
Teslin	71	1,942			71	1,942	1.021	1,984
Upper Liard	14.128	233			14	233	1.024	239
Destruction Bay	48	867			48	867	1.018	883
Whitehorse (1)	2,028	135,543	3	996	2,031	136,539	1.017	138,909
Beaver Creek	36	882			36	882	1.013	893
Watson Lake	173	6,221	1	210	174	6,431	1.017	6,538
Old Crow	41	866			41	866	1.017	881
Keno City	12	124			12	124	1.003	125
Stewart Crossing	13	264			13	264	1.021	269
Lower Post B.C.	14	249			14	249	1.019	253
Ross River	47	1,253			47	1,253	1.017	1,273
Pelly Crossing	28	1,010			28	1,010	1.021	1,031
Swift River	14	177			14	177	1.019	180
Tagish	24	255			24	255	1.021	261
Marsh Lake	25	347			25	347	1.020	354
Deep Creek	2	41			2	41	1.002	41
Minto Landing	3	68			3	68	1.018	70
TOTAL GENERAL	2,864	157,613		1,206	2,867	158,819		161,564

Schedule 2.1

Notes: (1) For Whitehorse Base customer values, please see Schedule 3

Table B: Summary of 2014 Commercial Forecast

CW-YECL-3
REVISED

	Base Customers	Base Billed Energy Fcst (MWh)	Specific Customer Adds (annual average)	Specific Customer Energy	Total Customers	Billed Energy Fcst (MWh)	Billed to Earned Factor	Earned Energy Fcst (MWh)
Communities	2014	2014				TOTAL		TOTAL
1	2=Schedule 4	3=Schedule 4	4=Schedule 2	5=Schedule 2	6=2+4	7=3+5	8=Schedule 5	9=7x8
Carmacks	80	2,489			80	2,489	1.017	2,532
Carcross	63	1,258			63	1,258	1.013	1,274
Haines Junction	130	3,626			130	3,626	1.014	3,678
Teslin	72	1,971			72	1,971	1.021	2,013
Upper Liard	14,377	237			14	237	1.024	243
Destruction Bay	49	880			49	880	1.018	895
Whitehorse (1)	2,050	137,009	5	2,508	2,055	139,517	1.017	141,939
Beaver Creek	37	897			37	897	1.013	909
Watson Lake	174	6,270	1	420	175	6,690	1.017	6,801
Old Crow	42	878			42	878	1.017	893
Keno City	12	126			12	126	1.003	127
Stewart Crossing	13	268			13	268	1.021	273
Lower Post B.C.	14	252			14	252	1.019	256
Ross River	48	1,271			48	1,271	1.017	1,292
Pelly Crossing	29	1,024			29	1,024	1.021	1,046
Swift River	14	179			14	179	1.019	183
Tagish	24	259			24	259	1.021	264
Marsh Lake	26	352			26	352	1.020	359
Deep Creek	2	41			2	41	1.002	42
Minto Landing	3	75			3	75	1.018	77
TOTAL GENERAL	2,898	159,362		2,928	2,903	162,289.9		165,095

Schedule 2.1

Notes: (1) For Whitehorse Base customer values, please see Schedule 3

Table C: Summary of 2015 Commercial Forecast

CW-YECL-3
REVISED

	Base Customers	Base Billed Energy Fcst (MWh)	Specific Customer Adds (annual average)	Specific Customer Energy	Total Customers	Billed Energy Fcst (MWh)	Billed to Earned Factor	Earned Energy Fcst (MWh)
Communities	2015	2015				TOTAL		TOTAL
1	2=Schedule 4	3=Schedule 4	4=Schedule 2	5=Schedule 2	6=2+4	7=3+5	8=Schedule 5	9=7x8
Carmacks	81	2,525			81	2,525	1.017	2,569
Carcross	64	1,276			64	1,276	1.013	1,293
Haines Junction	132	3,678			132	3,678	1.014	3,731
Teslin	73	2,002			73	2,002	1.021	2,045
Upper Liard	14,716	243			15	243	1.024	249
Destruction Bay	50	893			50	893	1.018	909
Whitehorse (1)	2,079	138,950	7	3,615	2,087	142,565	1.017	145,040
Beaver Creek	38	914			38	914	1.013	926
Watson Lake	177	6,366	1	420	178	6,786	1.017	6,899
Old Crow	42	891			42	891	1.017	906
Keno City	12	128			12	128	1.003	129
Stewart Crossing	13	272			13	272	1.021	277
Lower Post B.C.	15	255			15	255	1.019	260
Ross River	49	1,290			49	1,290	1.017	1,312
Pelly Crossing	29	1,039			29	1,039	1.021	1,061
Swift River	15	182			15	182	1.019	185
Tagish	25	263			25	263	1.021	268
Marsh Lake	26	357			26	357	1.020	364
Deep Creek	2	42			2	42	1.002	42
Minto Landing	4	83			4	83	1.018	84
TOTAL GENERAL	2,940	161,649		4,035	2,948	165,685		168,548

Schedule 2.1

**Yukon Electrical Company Limited
2013 - 2015 General Rate Application**

Table A: Specific Customer Adds

	2013 Additional Energy				2014 Additional Energy			2015 Additional Energy		Customers		2013 Add'l Energy Cust 1 (kWh)	Customers	
	Cust 1 (kWh)	Cust 2 (kWh)	Cust 3 (kWh)	Cust 4 (kWh)	Cust 5 (kWh)	Cust 6 (kWh)	Cust 7 (kWh)	Cust 8 (kWh)	Cust 9 (kWh)	Total	Average		Total	Average
Jan-13										-			-	
Feb-13										-			-	
Mar-13										-			-	
Apr-13	22,630									1			-	
May-13	22,630									1			-	
Jun-13	22,630	16,164	48,493	48,493						4			-	
Jul-13	22,630	16,164	48,493	48,493						4		35,040	1	
Aug-13	22,630	16,164	48,493	48,493						4		35,040	1	
Sep-13	22,630	16,164	48,493	48,493						4		35,040	1	
Oct-13	22,630	16,164	48,493	48,493						4		35,040	1	
Nov-13	22,630	16,164	48,493	48,493						4		35,040	1	
Dec-13	22,630	16,164	48,493	48,493						4	3	35,040	1	1
Jan-14	22,630	22,630	67,890	67,890						4		35,040	1	
Feb-14	22,630	22,630	67,890	67,890						4		35,040	1	
Mar-14	22,630	22,630	67,890	67,890						4		35,040	1	
Apr-14	22,630	22,630	67,890	67,890						4		35,040	1	
May-14	22,630	22,630	67,890	67,890						4		35,040	1	
Jun-14	22,630	22,630	67,890	67,890						4		35,040	1	
Jul-14	22,630	22,630	67,890	67,890						4		35,040	1	
Aug-14	22,630	22,630	67,890	67,890						4		35,040	1	
Sep-14	22,630	22,630	67,890	67,890						4		35,040	1	
Oct-14	22,630	22,630	67,890	67,890	22,630	43,800	45,260			7		35,040	1	
Nov-14	22,630	22,630	67,890	67,890	22,630	43,800	45,260			7		35,040	1	
Dec-14	22,630	22,630	67,890	67,890	22,630	43,800	45,260			7	5	35,040	1	1
Jan-15	22,630	22,630	67,890	67,890	22,630	43,800	45,260			7		35,040	1	
Feb-15	22,630	22,630	67,890	67,890	22,630	43,800	45,260			7		35,040	1	
Mar-15	22,630	22,630	67,890	67,890	22,630	43,800	45,260			7		35,040	1	
Apr-15	22,630	22,630	67,890	67,890	22,630	43,800	45,260			7		35,040	1	
May-15	22,630	22,630	67,890	67,890	22,630	43,800	45,260			7		35,040	1	
Jun-15	22,630	22,630	67,890	67,890	22,630	43,800	45,260			7		35,040	1	
Jul-15	22,630	22,630	67,890	67,890	22,630	43,800	45,260			7		35,040	1	
Aug-15	22,630	22,630	67,890	67,890	22,630	43,800	45,260			7		35,040	1	
Sep-15	22,630	22,630	67,890	67,890	22,630	43,800	45,260			7		35,040	1	
Oct-15	22,630	22,630	67,890	67,890	22,630	43,800	45,260			7		35,040	1	
Nov-15	22,630	22,630	67,890	67,890	22,630	43,800	45,260	25,550	25,550	9		35,040	1	
Dec-15	22,630	22,630	67,890	67,890	22,630	43,800	45,260	25,550	25,550	9	7	35,040	1	1
Annual Totals										Total		Annual Totals		
2013-F	203,670	113,150	339,450	339,450	-	-	-	-	-	995,720		2013-F	210,240	
2014-F	271,560	271,560	814,680	814,680	67,890	131,400	135,780	-	-	2,507,550		2014-F	420,480	
2015-F	271,560	271,560	814,680	814,680	271,560	525,600	543,120	51,100	51,100	3,614,960		2015-F	420,480	

Yukon Electrical Company Limited
2013 - 2015 General Rate Application
Whitehorse Base Commercial Forecast

Whitehorse Base Commercial Customers	BASE (Before Large Adds)				(Whitehorse) MHDD
	Customers	Actual UPC (kWh)	Normalized UPC (kWh)	Energy (kWh)	
Jan-98	1,649	6,510	6,406	10,735,219	1165.7
Feb-98	1,636	5,639	5,803	9,225,150	719.1
Mar-98	1,648	5,698	5,738	9,389,723	756.6
Apr-98	1,645	5,168	5,217	8,501,373	458.6
May-98	1,666	4,594	4,667	7,653,575	270.6
Jun-98	1,655	4,661	4,720	7,714,120	119.5
Jul-98	1,643	5,020	5,022	8,247,191	111.6
Aug-98	1,644	4,590	4,557	7,545,936	189.2
Sep-98	1,642	4,964	4,946	8,151,291	327.8
Oct-98	1,654	4,837	4,813	8,000,105	557.7
Nov-98	1,663	5,346	5,381	8,890,864	792.3
Dec-98	1,672	5,404	5,288	9,036,054	1051.8
Jan-99	1,670	6,310	6,180	10,537,212	1,183
Feb-99	1,662	5,781	5,579	9,607,851	976
Mar-99	1,665	5,636	5,709	9,383,909	734
Apr-99	1,671	5,330	5,307	8,906,205	509
May-99	1,673	4,619	4,519	7,726,882	392
Jun-99	1,665	4,951	4,961	8,243,728	154
Jul-99	1,664	4,693	4,699	7,808,371	109
Aug-99	1,649	4,814	4,843	7,938,088	146
Sep-99	1,661	4,777	4,782	7,933,808	311
Oct-99	1,631	4,767	4,825	7,774,298	500
Nov-99	1,628	5,700	5,735	9,279,565	793
Dec-99	1,643	5,409	5,588	8,886,266	844
Jan-00	1,645	6,270	6,283	10,313,342	1,083
Feb-00	1,646	5,618	5,760	9,247,783	735
Mar-00	1,651	5,373	5,552	8,870,464	659
Apr-00	1,644	5,136	5,104	8,443,072	516
May-00	1,656	4,910	4,824	8,130,814	382
Jun-00	1,639	5,036	5,019	8,253,857	173
Jul-00	1,643	5,239	5,198	8,608,146	142
Aug-00	1,639	4,599	4,522	7,537,654	220
Sep-00	1,653	4,689	4,634	7,751,449	354
Oct-00	1,637	5,076	5,078	8,308,993	539
Nov-00	1,650	5,164	5,344	8,521,038	691
Dec-00	1,643	5,333	5,321	8,761,532	978
Jan-01	1,632	6,240	6,768	10,184,241	723
Feb-01	1,635	5,374	5,332	8,786,468	864
Mar-01	1,651	5,576	5,604	9,206,099	765
Apr-01	1,649	5,256	5,236	8,666,356	507
May-01	1,644	4,875	4,777	8,014,257	390
Jun-01	1,626	5,068	5,059	8,240,335	167
Jul-01	1,628	4,858	4,821	7,909,557	140
Aug-01	1,624	4,690	4,727	7,615,762	140
Sep-01	1,642	4,701	4,710	7,718,506	309
Oct-01	1,641	4,777	4,731	7,839,267	573
Nov-01	1,647	5,163	5,162	8,504,116	818
Dec-01	1,651	6,072	5,894	10,024,659	1,095

Yukon Electrical Company Limited
2013 - 2015 General Rate Application
Whitehorse Base Commercial Forecast

Whitehorse Base Commercial Customers	BASE (Before Large Adds)				(Whitehorse) MHDD
	Customers	Actual UPC (kWh)	Normalized UPC (kWh)	Energy (kWh)	
Jan-02	1,652	6,629	6,853	10,951,080	936
Feb-02	1,644	5,650	5,664	9,288,783	825
Mar-02	1,653	5,655	5,462	9,348,209	921
Apr-02	1,650	5,824	5,596	9,609,869	653
May-02	1,657	4,990	4,933	8,268,251	362
Jun-02	1,665	4,981	4,960	8,292,927	176
Jul-02	1,660	4,834	4,809	8,024,723	131
Aug-02	1,656	5,117	5,093	8,474,109	183
Sep-02	1,649	4,695	4,696	7,741,980	314
Oct-02	1,674	4,779	4,917	8,000,187	444
Nov-02	1,671	5,344	5,678	8,930,222	583
Dec-02	1,660	5,252	5,429	8,717,761	845
Jan-03	1,659	6,122	6,269	10,156,110	989
Feb-03	1,663	5,473	5,584	9,100,970	757
Mar-03	1,675	5,560	5,490	9,313,508	835
Apr-03	1,663	5,639	5,609	9,377,998	514
May-03	1,687	4,799	4,740	8,096,541	364
Jun-03	1,655	5,197	5,152	8,601,844	193
Jul-03	1,662	4,875	4,916	8,102,548	84
Aug-03	1,658	4,831	4,810	8,010,231	181
Sep-03	1,664	4,981	4,918	8,288,208	359
Oct-03	1,657	4,913	5,019	8,140,663	467
Nov-03	1,670	5,714	5,632	9,542,613	875
Dec-03	1,675	6,035	6,118	10,108,563	912
Jan-04	1,675	6,331	6,096	10,605,074	1,258
Feb-04	1,669	5,889	6,084	9,827,952	697
Mar-04	1,678	5,723	5,769	9,603,827	754
Apr-04	1,673	5,679	5,717	9,500,870	467
May-04	1,683	4,923	4,993	8,284,611	273
Jun-04	1,685	5,261	5,371	8,864,143	84
Jul-04	1,675	5,388	5,443	9,024,437	74
Aug-04	1,673	5,198	5,290	8,696,604	102
Sep-04	1,689	4,971	4,897	8,396,465	368
Oct-04	1,704	4,903	4,903	8,353,942	541
Nov-04	1,700	5,552	5,691	9,438,374	720
Dec-04	1,692	5,929	6,029	10,031,917	900
Jan-05	1,695	6,545	6,441	11,094,349	1,166
Feb-05	1,703	5,834	5,890	9,934,638	795
Mar-05	1,713	5,579	5,824	9,556,887	614
Apr-05	1,701	5,451	5,508	9,271,969	453
May-05	1,711	5,227	5,320	8,942,598	257
Jun-05	1,699	4,921	4,930	8,360,369	154
Jul-05	1,703	5,073	5,045	8,639,652	133
Aug-05	1,700	5,043	5,065	8,573,524	151
Sep-05	1,719	5,110	5,133	8,784,835	299
Oct-05	1,710	5,023	5,033	8,589,960	535
Nov-05	1,720	5,827	5,905	10,022,927	763
Dec-05	1,707	5,698	5,948	9,726,467	794

**Yukon Electrical Company Limited
2013 - 2015 General Rate Application
Whitehorse Base Commercial Forecast**

Whitehorse Base Commercial Customers	BASE (Before Large Adds)				(Whitehorse) MHDD
	Customers	Actual UPC (kWh)	Normalized UPC (kWh)	Energy (kWh)	
Jan-06	1,712	6,646	6,640	11,377,324	1,096
Feb-06	1,710	5,773	5,792	9,872,441	821
Mar-06	1,715	6,397	6,225	10,971,322	906
Apr-06	1,696	5,960	5,923	10,107,989	519
May-06	1,748	4,761	4,725	8,321,928	347
Jun-06	1,730	5,286	5,269	9,145,264	173
Jul-06	1,736	5,287	5,279	9,178,255	118
Aug-06	1,741	5,008	4,957	8,719,688	202
Sep-06	1,747	5,008	5,036	8,748,995	296
Oct-06	1,744	5,297	5,326	9,237,260	521
Nov-06	1,754	5,718	5,226	10,029,371	1,162
Dec-06	1,753	6,174	6,382	10,823,542	824
Jan-07	1,752	6,817	7,074	11,943,556	912
Feb-07	1,762	6,297	6,063	11,095,328	999
Mar-07	1,770	6,667	6,426	11,800,895	954
Apr-07	1,760	6,031	6,004	10,614,723	512
May-07	1,774	5,036	5,036	8,933,347	322
Jun-07	1,754	5,129	5,158	8,995,924	141
Jul-07	1,761	5,518	5,533	9,716,489	102
Aug-07	1,768	4,950	4,967	8,752,313	154
Sep-07	1,773	5,037	5,047	8,931,422	308
Oct-07	1,774	4,990	4,986	8,851,952	544
Nov-07	1,778	5,813	5,944	10,334,697	725
Dec-07	1,771	5,865	5,723	10,386,533	1,070
Jan-08	1,768	6,899	6,868	12,196,869	1,114
Feb-08	1,765	6,600	6,429	11,649,227	955
Mar-08	1,765	5,840	5,912	10,307,654	735
Apr-08	1,768	6,124	6,089	10,826,351	517
May-08	1,783	4,996	5,016	8,907,241	308
Jun-08	1,809	5,010	4,918	9,063,550	226
Jul-08	1,791	4,791	4,705	8,580,173	173
Aug-08	1,794	5,501	5,470	9,869,120	188
Sep-08	1,802	4,961	4,956	8,939,459	319
Oct-08	1,803	4,959	4,928	8,940,719	563
Nov-08	1,758	6,095	6,144	10,714,995	783
Dec-08	1,773	5,798	5,490	10,280,063	1,186
Jan-09	1,789	7,570	7,506	13,543,505	1,138
Feb-09	1,794	5,991	5,819	10,747,772	955
Mar-09	1,802	6,296	6,177	11,344,681	869
Apr-09	1,803	5,849	5,817	10,544,854	515
May-09	1,801	5,030	5,017	9,059,430	331
Jun-09	1,806	4,873	4,897	8,800,466	144
Jul-09	1,811	5,336	5,408	9,663,288	63
Aug-09	1,821	5,044	5,055	9,185,022	158
Sep-09	1,827	4,767	4,780	8,709,101	306
Oct-09	1,831	4,920	4,919	9,008,981	542
Nov-09	1,841	5,672	5,723	10,443,040	782
Dec-09	1,843	5,611	5,648	10,340,528	943

Yukon Electrical Company Limited
2013 - 2015 General Rate Application
Whitehorse Base Commercial Forecast

Whitehorse Base Commercial Customers	BASE (Before Large Adds)				(Whitehorse) MHDD
	Customers	Actual UPC (kWh)	Normalized UPC (kWh)	Energy (kWh)	
Jan-10	1,855	6,873	7,018	12,750,313	991
Feb-10	1,854	5,793	6,014	10,739,999	679
Mar-10	1,853	5,694	5,878	10,550,465	656
Apr-10	1,872	5,852	5,898	10,955,417	461
May-10	1,882	5,064	5,106	9,529,520	292
Jun-10	1,878	5,075	5,059	9,530,854	172
Jul-10	1,888	4,885	4,879	9,223,514	117
Aug-10	1,883	4,927	4,955	9,277,423	146
Sep-10	1,796	5,003	4,978	8,985,101	332
Oct-10	1,873	5,088	5,117	9,529,688	520
Nov-10	1,902	5,773	5,915	10,980,325	718
Dec-10	1,894	5,902	5,628	11,178,789	1,163
Jan-11	1,895	7,318	7,436	13,868,531	1,010
Feb-11	1,901	5,885	5,784	11,187,292	906
Mar-11	1,904	6,638	6,472	12,639,624	902
Apr-11	1,914	5,638	5,612	10,790,977	511
May-11	1,920	5,379	5,416	10,328,077	296
Jun-11	1,926	5,025	5,025	9,677,894	161
Jul-11	1,924	4,935	4,914	9,494,900	128
Aug-11	1,933	4,867	4,793	9,408,841	218
Sep-11	1,944	5,020	5,001	9,758,502	329
Oct-11	1,937	5,224	5,264	10,119,093	513
Nov-11	1,956	5,624	5,454	11,001,007	936
Dec-11	1,961	6,057	6,335	11,877,662	775
Jan-12	1,964	7,288	7,252	14,314,241	1,118
Feb-12	1,964	6,086	6,267	11,953,663	708
Mar-12	1,971	5,990	6,032	11,806,946	756
Apr-12	1,967	5,947	6,007	11,697,409	451
May-12	1,993	5,350	5,309	10,663,094	351
Jun-12	1,970	5,063	5,007	9,974,100	200
Jul-12	2,003	4,956	4,918	9,927,438	140
Aug-12	2,005	4,808	4,819	9,639,853	158
Sep-12	1,997	4,626	4,666	9,238,345	287
Oct-12	2,005	5,242	5,113	10,510,210	631
Nov-12	2,013	5,613	5,395	11,298,741	970
Dec-12	2,005	6,396	6,072	12,822,998	1,197
Jan-13	2,015		7,252	14,614,192	
Feb-13	2,017		6,267	12,641,246	
Mar-13	2,020		6,032	12,185,918	
Apr-13	2,018		6,007	12,124,591	
May-13	2,030		5,309	10,778,962	
Jun-13	2,028		5,007	10,152,628	
Jul-13	2,031		4,918	9,987,718	
Aug-13	2,035		4,819	9,806,486	
Sep-13	2,038		4,666	9,508,869	
Oct-13	2,038		5,113	10,422,317	
Nov-13	2,036		5,395	10,984,488	
Dec-13	2,032		6,072	12,335,800	

Yukon Electrical Company Limited
2013 - 2015 General Rate Application
Whitehorse Base Commercial Forecast

Whitehorse Base Commercial Customers	BASE (Before Large Adds)			(Whitehorse) MHDD
	Customers	Actual UPC (kWh)	Normalized UPC (kWh)	
Jan-14	2,034		7,252	14,750,718
Feb-14	2,036		6,267	12,760,376
Mar-14	2,040		6,032	12,302,686
Apr-14	2,037		6,007	12,239,596
May-14	2,051		5,309	10,887,279
Jun-14	2,048		5,007	10,253,419
Jul-14	2,051		4,918	10,088,437
Aug-14	2,057		4,819	9,911,974
Sep-14	2,061		4,666	9,617,151
Oct-14	2,063		5,113	10,546,320
Nov-14	2,064		5,395	11,137,279
Dec-14	2,061		6,072	12,514,241
Jan-15	2,064		7,252	14,964,260
Feb-15	2,065		6,267	12,945,216
Mar-15	2,069		6,032	12,481,103
Apr-15	2,067		6,007	12,416,972
May-15	2,080		5,309	11,045,711
Jun-15	2,078		5,007	10,402,494
Jul-15	2,081		4,918	10,235,282
Aug-15	2,086		4,819	10,051,552
Sep-15	2,089		4,666	9,747,997
Oct-15	2,090		5,113	10,684,650
Nov-15	2,090		5,395	11,277,934
Dec-15	2,091		6,072	12,696,929
	Customers (annual avg)		Fcst Energy (kWh)	
2013-F	2,028			135,543,216
2014-F	2,050			137,009,476
2015-F	2,079			138,950,098

**Yukon Electrical Company Limited
2013 - 2015 General Rate Application**

Carmacks				Carcross				Haines Junction			
Commercial		Energy (kWh)		Commercial		Energy (kWh)		Commercial		Energy (kWh)	
monthly	Customers	(Billed)	UPC (kWh)	monthly	Customers	(Billed)	UPC (kWh)	monthly	Customers	(Billed)	UPC (kWh)
Jan-08	68	235,146	3,458	Jan-08	47	92,691	1,972	Jan-08	121	325,052	2,686
Feb-08	68	221,848	3,262	Feb-08	47	102,377	2,178	Feb-08	121	294,177	2,431
Mar-08	68	185,467	2,727	Mar-08	45	78,164	1,737	Mar-08	121	290,346	2,400
Apr-08	70	166,283	2,375	Apr-08	48	80,697	1,681	Apr-08	125	272,487	2,180
May-08	72	167,662	2,329	May-08	51	79,027	1,550	May-08	129	223,379	1,732
Jun-08	72	158,276	2,198	Jun-08	52	79,150	1,522	Jun-08	132	282,643	2,141
Jul-08	72	120,216	1,670	Jul-08	55	86,515	1,573	Jul-08	133	256,985	1,932
Aug-08	72	153,928	2,138	Aug-08	57	98,673	1,731	Aug-08	134	269,699	2,013
Sep-08	71	146,743	2,067	Sep-08	56	84,268	1,505	Sep-08	134	255,772	1,909
Oct-08	71	176,987	2,493	Oct-08	64	82,157	1,284	Oct-08	133	241,134	1,813
Nov-08	71	178,315	2,511	Nov-08	52	75,940	1,460	Nov-08	126	270,331	2,145
Dec-08	70	181,659	2,595	Dec-08	49	90,002	1,837	Dec-08	123	318,205	2,587
Jan-09	69	208,430	3,021	Jan-09	48	103,483	2,156	Jan-09	127	361,816	2,849
Feb-09	69	188,110	2,726	Feb-09	46	97,483	2,119	Feb-09	127	281,823	2,219
Mar-09	66	122,959	1,863	Mar-09	48	89,376	1,862	Mar-09	127	348,569	2,745
Apr-09	69	131,892	1,911	Apr-09	47	86,000	1,830	Apr-09	129	270,194	2,095
May-09	68	183,187	2,694	May-09	56	117,181	2,093	May-09	132	269,973	2,045
Jun-09	70	183,187	2,617	Jun-09	56	79,644	1,422	Jun-09	133	262,992	1,977
Jul-09	72	153,753	2,135	Jul-09	57	95,273	1,671	Jul-09	133	286,741	2,156
Aug-09	69	138,156	2,002	Aug-09	57	84,624	1,485	Aug-09	133	271,919	2,045
Sep-09	71	147,089	2,072	Sep-09	56	87,061	1,555	Sep-09	134	245,373	1,831
Oct-09	72	164,608	2,286	Oct-09	54	92,626	1,715	Oct-09	134	262,557	1,959
Nov-09	71	158,313	2,230	Nov-09	52	68,826	1,324	Nov-09	128	311,882	2,437
Dec-09	70	158,313	2,262	Dec-09	48	81,965	1,708	Dec-09	127	284,686	2,242
Jan-10	73	280,962	3,849	Jan-10	48	93,702	1,952	Jan-10	126	350,767	2,784
Feb-10	71	184,747	2,602	Feb-10	48	97,073	2,022	Feb-10	126	265,556	2,108
Mar-10	72	180,907	2,513	Mar-10	48	83,495	1,739	Mar-10	125	294,885	2,359
Apr-10	73	165,009	2,260	Apr-10	48	79,796	1,662	Apr-10	127	283,266	2,230
May-10	75	162,319	2,164	May-10	57	76,503	1,342	May-10	132	277,130	2,099
Jun-10	76	228,585	3,008	Jun-10	57	82,284	1,444	Jun-10	130	278,384	2,141
Jul-10	77	164,320	2,134	Jul-10	58	87,157	1,503	Jul-10	132	258,243	1,956
Aug-10	79	85,479	1,082	Aug-10	58	82,690	1,426	Aug-10	134	248,639	1,856
Sep-10	57	83,926	1,472	Sep-10	58	102,151	1,761	Sep-10	133	263,572	1,982
Oct-10	77	298,012	3,870	Oct-10	56	81,327	1,452	Oct-10	133	254,275	1,912
Nov-10	79	223,677	2,831	Nov-10	50	91,347	1,827	Nov-10	128	313,316	2,448
Dec-10	78	205,672	2,637	Dec-10	48	95,210	1,984	Dec-10	128	292,149	2,282
Jan-11	76	268,896	3,538	Jan-11	48	128,469	2,676	Jan-11	128	389,779	3,045
Feb-11	77	220,736	2,867	Feb-11	50	93,657	1,873	Feb-11	128	320,788	2,506
Mar-11	74	226,823	3,065	Mar-11	50	131,485	2,630	Mar-11	127	351,046	2,764
Apr-11	77	165,843	2,154	Apr-11	57	101,202	1,775	Apr-11	128	301,473	2,355
May-11	77	222,799	2,893	May-11	58	86,082	1,484	May-11	134	286,001	2,134
Jun-11	79	155,785	1,972	Jun-11	61	101,218	1,659	Jun-11	134	267,487	1,996
Jul-11	79	184,241	2,332	Jul-11	60	83,273	1,388	Jul-11	132	272,609	2,065
Aug-11	80	176,149	2,202	Aug-11	60	84,352	1,406	Aug-11	132	253,808	1,923
Sep-11	79	212,191	2,686	Sep-11	59	93,479	1,584	Sep-11	132	271,118	2,054
Oct-11	80	197,727	2,472	Nov-11	60	81,050	1,351	Nov-11	131	298,662	2,280
Nov-11	79	235,750	2,984	Nov-11	54	78,677	1,457	Nov-11	128	310,832	2,428
Dec-11	79	218,199	2,762	Dec-11	55	113,921	2,071	Dec-11	128	359,882	2,812
Jan-12	80	255,628	3,195	Jan-12	56	91,494	1,634	Jan-12	129	349,457	2,709
Feb-12	77	209,845	2,725	Feb-12	56	122,699	2,191	Feb-12	129	385,698	2,990
Mar-12	75	247,316	3,298	Mar-12	56	98,185	1,753	Mar-12	129	339,723	2,634
Apr-12	79	204,654	2,591	Apr-12	59	87,421	1,482	Apr-12	129	356,615	2,764
May-12	76	173,845	2,287	May-12	59	85,896	1,456	May-12	129	228,425	1,771
Jun-12	77	192,728	2,503	Jun-12	61	86,001	1,410	Jun-12	127	333,608	2,627
Jul-12	77	164,369	2,135	Jul-12	63	90,330	1,434	Jul-12	125	304,523	2,436
Aug-12	79	195,417	2,474	Aug-12	64	85,103	1,330	Aug-12	128	241,354	1,886
Sep-12	79	164,256	2,079	Sep-12	63	77,070	1,223	Sep-12	128	310,488	2,426
Oct-12	80	211,916	2,649	Oct-12	62	76,217	1,229	Oct-12	133	251,153	1,888
Nov-12	78	219,960	2,820	Nov-12	62	88,296	1,424	Nov-12	129	319,377	2,476
Dec-12	78	205,098	2,629	Dec-12	62	99,243	1,601	Dec-12	127	347,738	2,738

**Yukon Electrical Company Limited
2013 - 2015 General Rate Application**

Carmacks				Carcross				Haines Junction			
Commercial		Energy (kWh)		Commercial		Energy (kWh)		Commercial		Energy (kWh)	
monthly	Customers	(Billed)	UPC (kWh)	monthly	Customers	(Billed)	UPC (kWh)	monthly	Customers	(Billed)	UPC (kWh)
Jan-13	78	275,445	3,527	Jan-13	62	129,563	2,087	Jan-13	127	361,849	2,846
Feb-13	78	213,519	2,731	Feb-13	62	126,061	2,029	Feb-13	127	322,613	2,535
Mar-13	78	231,528	2,958	Mar-13	62	126,942	2,041	Mar-13	127	329,479	2,586
Apr-13	78	182,934	2,335	Apr-13	62	102,112	1,640	Apr-13	128	312,559	2,450
May-13	78	192,037	2,448	May-13	62	88,978	1,427	May-13	128	255,625	2,002
Jun-13	79	195,847	2,494	Jun-13	62	93,869	1,504	Jun-13	128	288,297	2,255
Jul-13	79	172,959	2,200	Jul-13	62	90,048	1,441	Jul-13	128	275,537	2,153
Aug-13	79	151,027	1,919	Aug-13	63	86,745	1,387	Aug-13	128	241,933	1,888
Sep-13	79	163,800	2,079	Sep-13	63	95,345	1,523	Sep-13	128	276,305	2,154
Oct-13	79	236,362	2,997	Oct-13	63	84,239	1,344	Oct-13	128	260,291	2,027
Nov-13	79	227,271	2,879	Nov-13	63	98,459	1,569	Nov-13	129	315,091	2,451
Dec-13	79	211,522	2,676	Dec-13	63	118,400	1,885	Dec-13	129	336,042	2,611
Jan-14	79	279,150	3,527	Jan-14	63	131,259	2,087	Jan-14	129	366,780	2,846
Feb-14	79	216,412	2,731	Feb-14	63	127,724	2,029	Feb-14	129	327,043	2,535
Mar-14	79	234,690	2,958	Mar-14	63	128,630	2,041	Mar-14	129	334,036	2,586
Apr-14	79	185,451	2,335	Apr-14	63	103,480	1,640	Apr-14	129	316,915	2,450
May-14	80	194,698	2,448	May-14	63	90,178	1,427	May-14	130	259,213	2,002
Jun-14	80	198,580	2,494	Jun-14	63	95,145	1,504	Jun-14	130	292,374	2,255
Jul-14	80	175,390	2,200	Jul-14	63	91,281	1,441	Jul-14	130	279,461	2,153
Aug-14	80	153,166	1,919	Aug-14	63	87,941	1,387	Aug-14	130	245,403	1,888
Sep-14	80	166,135	2,079	Sep-14	63	96,669	1,523	Sep-14	130	280,297	2,154
Oct-14	80	239,756	2,997	Oct-14	64	85,417	1,344	Oct-14	130	264,077	2,027
Nov-14	80	230,557	2,879	Nov-14	64	99,845	1,569	Nov-14	130	319,706	2,451
Dec-14	80	214,602	2,676	Dec-14	64	120,078	1,885	Dec-14	131	340,999	2,611
Jan-15	80	283,217	3,527	Jan-15	64	133,168	2,087	Jan-15	131	372,012	2,846
Feb-15	80	219,568	2,731	Feb-15	64	129,583	2,029	Feb-15	131	331,712	2,535
Mar-15	80	238,115	2,958	Mar-15	64	130,503	2,041	Mar-15	131	338,809	2,586
Apr-15	81	188,159	2,335	Apr-15	64	104,988	1,640	Apr-15	131	321,447	2,450
May-15	81	197,544	2,448	May-15	64	91,493	1,427	May-15	131	262,923	2,002
Jun-15	81	201,485	2,494	Jun-15	64	96,534	1,504	Jun-15	132	296,561	2,255
Jul-15	81	177,957	2,200	Jul-15	64	92,614	1,441	Jul-15	132	283,467	2,153
Aug-15	81	155,409	1,919	Aug-15	64	89,226	1,387	Aug-15	132	248,924	1,888
Sep-15	81	168,571	2,079	Sep-15	64	98,083	1,523	Sep-15	132	284,321	2,154
Oct-15	81	243,273	2,997	Oct-15	64	86,667	1,344	Oct-15	132	267,872	2,027
Nov-15	81	233,942	2,879	Nov-15	65	101,308	1,569	Nov-15	132	324,304	2,451
Dec-15	81	217,755	2,676	Dec-15	65	121,839	1,885	Dec-15	132	345,906	2,611
Customers	Energy	Avg UPC		Customers	Energy	Avg UPC		Customers	Energy	Avg UPC	
2013-F	79	2,454,250	31,239	2013-F	62	1,240,761	19,872	2013-F	128	3,575,620	27,950
2014-F	80	2,488,587	31,238	2014-F	63	1,257,646	19,872	2014-F	130	3,626,304	27,949
2015-F	81	2,524,995	31,238	2015-F	64	1,276,005	19,872	2015-F	132	3,678,258	27,949

**Yukon Electrical Company Limited
2013 - 2015 General Rate Application**

Teslin				Upper Liard				Destruction Bay			
Commercial		Energy (kWh)		Commercial		Energy (kWh)		Commercial		Energy (kWh)	
monthly	Customers	(Billed)	UPC (kWh)	monthly	Customers	(Billed)	UPC (kWh)	monthly	Customers	(Billed)	UPC (kWh)
Jan-08	66	220,160	3,336	Jan-08	14	28,244	2,017	Jan-08	49	98,811	2,017
Feb-08	66	219,812	3,330	Feb-08	14	29,677	2,120	Feb-08	49	86,537	1,766
Mar-08	66	147,735	2,238	Mar-08	14	20,208	1,443	Mar-08	49	85,684	1,749
Apr-08	72	135,464	1,881	Apr-08	14	22,381	1,599	Apr-08	50	82,964	1,659
May-08	76	165,074	2,172	May-08	19	17,788	936	May-08	49	70,133	1,431
Jun-08	79	122,645	1,552	Jun-08	19	18,135	954	Jun-08	48	81,207	1,692
Jul-08	78	131,460	1,685	Jul-08	20	24,171	1,209	Jul-08	48	64,509	1,344
Aug-08	78	149,971	1,923	Aug-08	20	23,774	1,189	Aug-08	48	78,590	1,637
Sep-08	78	125,108	1,604	Sep-08	19	24,663	1,298	Sep-08	48	72,037	1,501
Oct-08	82	145,567	1,775	Oct-08	18	19,458	1,081	Oct-08	50	62,500	1,250
Nov-08	67	180,680	2,697	Nov-08	14	18,681	1,334	Nov-08	48	82,307	1,715
Dec-08	69	193,687	2,807	Dec-08	14	20,331	1,452	Dec-08	46	76,655	1,666
Jan-09	68	233,026	3,427	Jan-09	14	32,633	2,331	Jan-09	45	96,095	2,135
Feb-09	61	206,649	3,388	Feb-09	14	26,898	1,921	Feb-09	47	93,758	1,995
Mar-09	70	200,059	2,858	Mar-09	14	27,402	1,957	Mar-09	47	67,529	1,437
Apr-09	74	191,713	2,591	Apr-09	14	24,739	1,767	Apr-09	47	85,901	1,828
May-09	77	158,150	2,054	May-09	19	15,031	791	May-09	48	52,407	1,092
Jun-09	77	122,767	1,594	Jun-09	19	22,465	1,182	Jun-09	48	63,275	1,318
Jul-09	77	147,605	1,917	Jul-09	21	23,789	1,133	Jul-09	48	63,426	1,321
Aug-09	77	132,777	1,724	Aug-09	19	27,439	1,444	Aug-09	48	60,050	1,251
Sep-09	77	136,847	1,777	Sep-09	21	23,822	1,134	Sep-09	48	65,148	1,357
Oct-09	78	177,110	2,271	Oct-09	19	26,213	1,380	Oct-09	48	54,086	1,127
Nov-09	70	186,573	2,665	Nov-09	15	29,293	1,953	Nov-09	49	66,276	1,353
Dec-09	69	186,388	2,701	Dec-09	15	25,715	1,714	Dec-09	49	70,872	1,446
Jan-10	69	232,990	3,377	Jan-10	15	29,599	1,973	Jan-10	49	96,239	1,964
Feb-10	69	217,890	3,158	Feb-10	15	24,797	1,653	Feb-10	49	73,570	1,501
Mar-10	68	197,759	2,908	Mar-10	15	24,754	1,650	Mar-10	48	67,624	1,409
Apr-10	72	200,870	2,790	Apr-10	14	23,362	1,669	Apr-10	49	81,295	1,659
May-10	74	127,137	1,718	May-10	19	17,357	914	May-10	50	58,964	1,179
Jun-10	77	132,809	1,725	Jun-10	19	21,359	1,124	Jun-10	51	65,892	1,292
Jul-10	77	135,649	1,762	Jul-10	20	21,826	1,091	Jul-10	49	65,993	1,347
Aug-10	77	120,304	1,562	Aug-10	20	23,776	1,189	Aug-10	49	61,048	1,246
Sep-10	75	161,500	2,153	Sep-10	10	2,611	261	Sep-10	48	69,838	1,455
Oct-10	76	128,809	1,695	Oct-10	17	39,592	2,329	Oct-10	48	59,250	1,234
Nov-10	69	150,694	2,184	Nov-10	13	18,982	1,460	Nov-10	50	66,576	1,332
Dec-10	68	207,231	3,048	Dec-10	13	19,420	1,494	Dec-10	48	71,893	1,498
Jan-11	67	216,649	3,234	Jan-11	13	22,395	1,723	Jan-11	48	92,114	1,919
Feb-11	68	172,050	2,530	Feb-11	13	17,524	1,348	Feb-11	48	76,842	1,601
Mar-11	68	204,761	3,011	Mar-11	13	20,527	1,579	Mar-11	48	80,407	1,675
Apr-11	72	156,663	2,176	Apr-11	13	14,425	1,110	Apr-11	48	82,157	1,712
May-11	74	157,402	2,127	May-11	18	18,447	1,025	May-11	50	77,539	1,551
Jun-11	77	125,865	1,635	Jun-11	20	19,697	985	Jun-11	51	66,668	1,307
Jul-11	77	155,130	2,015	Jul-11	21	22,834	1,087	Jul-11	49	56,949	1,162
Aug-11	76	126,337	1,662	Aug-11	21	27,406	1,305	Aug-11	49	59,188	1,208
Sep-11	76	148,165	1,950	Sep-11	21	21,359	1,017	Sep-11	48	68,672	1,431
Nov-11	77	141,950	1,844	Nov-11	20	23,058	1,153	Nov-11	46	58,423	1,270
Nov-11	73	172,572	2,364	Nov-11	15	23,920	1,595	Nov-11	51	72,617	1,424
Dec-11	73	182,419	2,499	Dec-11	14	22,716	1,623	Dec-11	49	80,264	1,638
Jan-12	73	231,512	3,171	Jan-12	14	29,037	2,074	Jan-12	49	117,375	2,395
Feb-12	74	184,836	2,498	Feb-12	14	21,334	1,524	Feb-12	49	85,389	1,743
Mar-12	71	201,328	2,836	Mar-12	14	20,493	1,464	Mar-12	49	88,354	1,803
Apr-12	69	161,008	2,333	Apr-12	14	19,770	1,412	Apr-12	49	74,158	1,513
May-12	76	128,792	1,695	May-12	19	19,550	1,029	May-12	49	60,613	1,237
Jun-12	77	150,812	1,959	Jun-12	20	23,487	1,174	Jun-12	49	64,301	1,312
Jul-12	78	133,981	1,718	Jul-12	21	26,968	1,284	Jul-12	47	56,219	1,196
Aug-12	78	124,243	1,593	Aug-12	21	25,365	1,208	Aug-12	51	72,895	1,429
Sep-12	78	151,839	1,947	Sep-12	20	22,888	1,144	Sep-12	50	78,441	1,569
Oct-12	79	144,168	1,825	Oct-12	21	25,309	1,205	Oct-12	48	67,509	1,406
Nov-12	73	214,556	2,939	Nov-12	20	26,678	1,334	Nov-12	48	72,022	1,500
Dec-12	70	208,877	2,984	Dec-12	14	32,204	2,300	Dec-12	48	81,645	1,701

Yukon Electrical Company Limited
2013 - 2015 General Rate Application

Teslin				Upper Liard				Destruction Bay				
Commercial		Energy (kWh)		Commercial		Energy (kWh)		Commercial		Energy (kWh)		
monthly	Customers	(Billed)	UPC (kWh)	monthly	Customers	(Billed)	UPC (kWh)	monthly	Customers	(Billed)	UPC (kWh)	
Jan-13	70	228,510	3,261	Jan-13	14	26,965	1,923	Jan-13	48	100,570	2,093	
Feb-13	70	191,455	2,729	Feb-13	14	21,176	1,508	Feb-13	48	77,695	1,615	
Mar-13	70	205,013	2,918	Mar-13	14	21,993	1,564	Mar-13	48	78,460	1,629	
Apr-13	70	171,125	2,433	Apr-13	14	19,665	1,397	Apr-13	48	78,501	1,628	
May-13	70	130,030	1,847	May-13	14	13,945	989	May-13	48	63,833	1,322	
Jun-13	70	124,972	1,773	Jun-13	14	15,451	1,094	Jun-13	48	63,010	1,304	
Jul-13	71	129,262	1,831	Jul-13	14	16,318	1,154	Jul-13	48	59,754	1,235	
Aug-13	71	113,480	1,606	Aug-13	14	17,468	1,234	Aug-13	48	62,694	1,294	
Sep-13	71	142,667	2,017	Sep-13	14	11,448	808	Sep-13	48	71,999	1,485	
Oct-13	71	126,632	1,788	Oct-13	14	22,180	1,562	Oct-13	49	63,284	1,304	
Nov-13	71	176,985	2,496	Nov-13	14	20,797	1,463	Nov-13	49	68,943	1,419	
Dec-13	71	201,884	2,843	Dec-13	14	25,703	1,806	Dec-13	49	78,442	1,612	
Jan-14	71	231,797	3,261	Jan-14	14	27,422	1,923	Jan-14	49	101,950	2,093	
Feb-14	71	194,230	2,729	Feb-14	14	21,537	1,508	Feb-14	49	78,769	1,615	
Mar-14	71	208,006	2,918	Mar-14	14	22,371	1,564	Mar-14	49	79,553	1,629	
Apr-14	71	173,642	2,433	Apr-14	14	20,006	1,397	Apr-14	49	79,602	1,628	
May-14	71	131,956	1,847	May-14	14	14,188	989	May-14	49	64,735	1,322	
Jun-14	72	126,837	1,773	Jun-14	14	15,723	1,094	Jun-14	49	63,907	1,304	
Jul-14	72	131,205	1,831	Jul-14	14	16,607	1,154	Jul-14	49	60,610	1,235	
Aug-14	72	115,198	1,606	Aug-14	14	17,780	1,234	Aug-14	49	63,599	1,294	
Sep-14	72	144,841	2,017	Sep-14	14	11,653	808	Sep-14	49	73,046	1,485	
Oct-14	72	128,575	1,788	Oct-14	14	22,580	1,562	Oct-14	49	64,211	1,304	
Nov-14	72	179,720	2,496	Nov-14	14	21,175	1,463	Nov-14	49	69,960	1,419	
Dec-14	72	205,024	2,843	Dec-14	14	26,174	1,806	Dec-14	49	79,606	1,612	
Jan-15	72	235,418	3,261	Jan-15	15	28,070	1,923	Jan-15	49	103,541	2,093	
Feb-15	72	197,267	2,729	Feb-15	15	22,046	1,508	Feb-15	50	79,999	1,615	
Mar-15	72	211,261	2,918	Mar-15	15	22,900	1,564	Mar-15	50	80,796	1,629	
Apr-15	72	176,360	2,433	Apr-15	15	20,479	1,397	Apr-15	50	80,847	1,628	
May-15	73	134,024	1,847	May-15	15	14,523	989	May-15	50	65,748	1,322	
Jun-15	73	128,826	1,773	Jun-15	15	16,094	1,094	Jun-15	50	64,908	1,304	
Jul-15	73	133,263	1,831	Jul-15	15	17,000	1,154	Jul-15	50	61,560	1,235	
Aug-15	73	117,006	1,606	Aug-15	15	18,200	1,234	Aug-15	50	64,596	1,294	
Sep-15	73	147,117	2,017	Sep-15	15	11,929	808	Sep-15	50	74,192	1,485	
Oct-15	73	130,596	1,788	Oct-15	15	23,114	1,562	Oct-15	50	65,219	1,304	
Nov-15	73	182,547	2,496	Nov-15	15	21,675	1,463	Nov-15	50	71,059	1,419	
Dec-15	73	208,251	2,843	Dec-15	15	26,792	1,806	Dec-15	50	80,858	1,612	
		Customers	Energy			Customers	Energy			Customers	Energy	Avg UPC
2013-F	71	1,942,015	27,530	2013-F	14	233,109	16,500	2013-F	48	867,184	17,934	
2014-F	72	1,971,033	27,529	2014-F	14	237,215	16,500	2014-F	49	879,549	17,934	
2015-F	73	2,001,936	27,529	2015-F	15	242,820	16,500	2015-F	50	893,324	17,933	

Yukon Electrical Company Limited
2013 - 2015 General Rate Application

Beaver Creek				Watson Lake				BASE (Before Large Adds)				Old Crow			
Commercial		Energy (kWh)		Base Commercial	Customers	Energy	Actual	Commercial	Customers	Energy (kWh)	UPC (kWh)	Commercial	Customers	Energy (kWh)	UPC (kWh)
monthly	Customers	(Billed)	UPC (kWh)	monthly		(kWh)	UPC (kWh)	monthly				monthly			
Jan-08	44	89,358	2,031	Jan-08	166	572,441	3,448	Jan-08	36	67,068	1,863	Jan-08	36	67,068	1,863
Feb-08	44	133,371	3,031	Feb-08	165	590,669	3,580	Feb-08	36	82,504	2,292	Feb-08	36	82,504	2,292
Mar-08	44	38,006	864	Mar-08	165	544,032	3,297	Mar-08	36	67,205	1,867	Mar-08	36	67,205	1,867
Apr-08	52	79,993	1,538	Apr-08	166	502,010	3,024	Apr-08	36	61,010	1,695	Apr-08	36	61,010	1,695
May-08	53	118,707	2,240	May-08	175	491,312	2,807	May-08	36	64,410	1,789	May-08	36	64,410	1,789
Jun-08	53	79,837	1,506	Jun-08	182	469,175	2,578	Jun-08	38	65,153	1,715	Jun-08	38	65,153	1,715
Jul-08	51	114,280	2,241	Jul-08	180	501,315	2,785	Jul-08	39	46,313	1,188	Jul-08	39	46,313	1,188
Aug-08	51	132,679	2,602	Aug-08	181	522,406	2,886	Aug-08	38	63,222	1,664	Aug-08	38	63,222	1,664
Sep-08	49	88,448	1,805	Sep-08	188	437,685	2,328	Sep-08	38	50,827	1,338	Sep-08	38	50,827	1,338
Oct-08	48	68,743	1,432	Oct-08	168	434,163	2,584	Oct-08	36	46,442	1,290	Oct-08	36	46,442	1,290
Nov-08	41	81,156	1,979	Nov-08	163	532,668	3,268	Nov-08	36	77,581	2,155	Nov-08	36	77,581	2,155
Dec-08	41	82,977	2,024	Dec-08	165	529,892	3,211	Dec-08	36	70,871	1,969	Dec-08	36	70,871	1,969
Jan-09	42	102,810	2,448	Jan-09	165	612,999	3,715	Jan-09	35	85,987	2,457	Jan-09	35	85,987	2,457
Feb-09	41	86,079	2,099	Feb-09	167	544,359	3,260	Feb-09	35	63,846	1,824	Feb-09	35	63,846	1,824
Mar-09	42	84,699	2,017	Mar-09	163	518,737	3,182	Mar-09	36	77,262	2,146	Mar-09	36	77,262	2,146
Apr-09	45	80,255	1,783	Apr-09	162	496,967	3,068	Apr-09	36	74,060	2,057	Apr-09	36	74,060	2,057
May-09	51	77,033	1,510	May-09	169	467,605	2,767	May-09	37	69,284	1,873	May-09	37	69,284	1,873
Jun-09	51	93,100	1,825	Jun-09	176	445,940	2,534	Jun-09	36	52,610	1,461	Jun-09	36	52,610	1,461
Jul-09	51	129,021	2,530	Jul-09	177	494,796	2,795	Jul-09	36	66,046	1,835	Jul-09	36	66,046	1,835
Aug-09	51	106,975	2,098	Aug-09	175	464,386	2,654	Aug-09	35	45,682	1,305	Aug-09	35	45,682	1,305
Sep-09	51	103,498	2,029	Sep-09	177	441,280	2,493	Sep-09	35	44,662	1,276	Sep-09	35	44,662	1,276
Oct-09	50	111,981	2,240	Oct-09	167	500,060	2,994	Oct-09	35	66,900	1,911	Oct-09	35	66,900	1,911
Nov-09	41	38,788	946	Nov-09	164	635,272	3,874	Nov-09	34	59,153	1,740	Nov-09	34	59,153	1,740
Dec-09	41	77,194	1,883	Dec-09	166	446,774	2,691	Dec-09	35	69,048	1,973	Dec-09	35	69,048	1,973
Jan-10	39	99,620	2,554	Jan-10	159	618,993	3,893	Jan-10	35	82,489	2,357	Jan-10	35	82,489	2,357
Feb-10	39	82,939	2,127	Feb-10	161	590,130	3,665	Feb-10	35	64,923	1,855	Feb-10	35	64,923	1,855
Mar-10	39	78,339	2,009	Mar-10	156	522,517	3,349	Mar-10	35	65,174	1,862	Mar-10	35	65,174	1,862
Apr-10	43	74,945	1,743	Apr-10	165	533,742	3,235	Apr-10	35	80,462	2,299	Apr-10	35	80,462	2,299
May-10	49	88,043	1,797	May-10	178	441,090	2,478	May-10	35	53,747	1,536	May-10	35	53,747	1,536
Jun-10	51	107,992	2,117	Jun-10	185	439,015	2,373	Jun-10	35	54,364	1,553	Jun-10	35	54,364	1,553
Jul-10	53	128,036	2,416	Jul-10	184	484,601	2,634	Jul-10	35	47,590	1,360	Jul-10	35	47,590	1,360
Aug-10	53	125,452	2,367	Aug-10	184	455,164	2,474	Aug-10	39	46,323	1,188	Aug-10	39	46,323	1,188
Sep-10	53	92,687	1,749	Sep-10	157	401,724	2,559	Sep-10	40	47,352	1,184	Sep-10	40	47,352	1,184
Oct-10	52	94,315	1,814	Oct-10	175	545,857	3,119	Oct-10	40	59,598	1,490	Oct-10	40	59,598	1,490
Nov-10	45	81,812	1,818	Nov-10	174	524,193	3,013	Nov-10	40	66,045	1,651	Nov-10	40	66,045	1,651
Dec-10	41	75,385	1,839	Dec-10	171	564,653	3,302	Dec-10	39	66,299	1,700	Dec-10	39	66,299	1,700
Jan-11	41	110,795	2,702	Jan-11	171	655,153	3,831	Jan-11	40	87,427	2,186	Jan-11	40	87,427	2,186
Feb-11	41	80,033	1,952	Feb-11	171	538,445	3,149	Feb-11	40	79,874	1,997	Feb-11	40	79,874	1,997
Mar-11	41	91,959	2,243	Mar-11	171	601,947	3,520	Mar-11	40	73,122	1,828	Mar-11	40	73,122	1,828
Apr-11	52	85,935	1,653	Apr-11	170	507,810	2,987	Apr-11	40	73,497	1,837	Apr-11	40	73,497	1,837
May-11	53	123,375	2,328	May-11	181	481,162	2,658	May-11	40	72,699	1,817	May-11	40	72,699	1,817
Jun-11	53	100,289	1,892	Jun-11	188	460,157	2,448	Jun-11	40	62,070	1,552	Jun-11	40	62,070	1,552
Jul-11	52	115,620	2,223	Jul-11	186	444,037	2,387	Jul-11	40	61,581	1,540	Jul-11	40	61,581	1,540
Aug-11	54	127,427	2,360	Aug-11	190	366,835	1,931	Aug-11	40	55,150	1,379	Aug-11	40	55,150	1,379
Sep-11	54	113,926	2,110	Sep-11	185	457,783	2,475	Sep-11	40	61,418	1,535	Sep-11	40	61,418	1,535
Nov-11	50	90,446	1,809	Nov-11	183	485,944	2,655	Nov-11	40	59,221	1,481	Nov-11	40	59,221	1,481
Nov-11	44	78,777	1,790	Nov-11	178	551,841	3,100	Nov-11	40	68,823	1,721	Nov-11	40	68,823	1,721
Dec-11	41	86,463	2,109	Dec-11	176	593,611	3,373	Dec-11	40	82,704	2,068	Dec-11	40	82,704	2,068
Jan-12	39	90,079	2,310	Jan-12	176	721,619	4,100	Jan-12	40	81,822	2,046	Jan-12	40	81,822	2,046
Feb-12	39	76,311	1,957	Feb-12	174	584,459	3,359	Feb-12	40	73,746	1,844	Feb-12	40	73,746	1,844
Mar-12	39	78,695	2,018	Mar-12	174	618,441	3,554	Mar-12	40	96,431	2,411	Mar-12	40	96,431	2,411
Apr-12	50	72,969	1,459	Apr-12	172	543,793	3,162	Apr-12	40	80,562	2,014	Apr-12	40	80,562	2,014
May-12	50	78,673	1,573	May-12	178	525,476	2,952	May-12	40	65,105	1,628	May-12	40	65,105	1,628
Jun-12	50	117,501	2,350	Jun-12	185	515,897	2,789	Jun-12	41	74,146	1,808	Jun-12	41	74,146	1,808
Jul-12	50	103,170	2,063	Jul-12	186	450,262	2,421	Jul-12	41	52,307	1,276	Jul-12	41	52,307	1,276
Aug-12	50	115,724	2,314	Aug-12	183	492,001	2,689	Aug-12	41	71,273	1,738	Aug-12	41	71,273	1,738
Sep-12	50	86,264	1,725	Sep-12	186	568,132	3,054	Sep-12	40	50,379	1,259	Sep-12	40	50,379	1,259
Oct-12	50	78,314	1,566	Oct-12	179	327,900	1,832	Oct-12	40	64,873	1,622	Oct-12	40	64,873	1,622
Nov-12	43	83,120	1,933	Nov-12	173	611,768	3,536	Nov-12	41	65,249	1,591	Nov-12	41	65,249	1,591
Dec-12	36	73,580	2,044	Dec-12	169	643,981	3,811	Dec-12	41	111,378	2,717	Dec-12	41	111,378	2,717

Yukon Electrical Company Limited
2013 - 2015 General Rate Application

Beaver Creek				Watson Lake				BASE (Before Large Adds)				Old Crow			
Commercial	monthly	Customers	Energy (kWh)		Base Commercial	Customers	Energy		Actual	Commercial	monthly	Customers	Energy (kWh)		
			(Billed)	UPC (kWh)			(kWh)	UPC (kWh)					(Billed)	UPC (kWh)	
Jan-13	36	90,925	2,522	Jan-13	173	682,658	3,941	Jan-13	41	90,135	2,196				
Feb-13	36	72,628	2,012	Feb-13	173	586,652	3,391	Feb-13	41	78,008	1,898				
Mar-13	36	75,551	2,090	Mar-13	173	601,111	3,475	Mar-13	41	83,654	2,034				
Apr-13	36	58,587	1,618	Apr-13	173	541,115	3,128	Apr-13	41	84,424	2,050				
May-13	36	68,858	1,899	May-13	173	466,437	2,696	May-13	41	68,443	1,660				
Jun-13	36	76,962	2,120	Jun-13	173	438,805	2,536	Jun-13	41	67,592	1,638				
Jul-13	36	81,224	2,234	Jul-13	173	429,142	2,481	Jul-13	41	57,497	1,392				
Aug-13	36	85,446	2,347	Aug-13	173	409,027	2,364	Aug-13	41	59,350	1,435				
Sep-13	36	67,855	1,861	Sep-13	173	466,392	2,696	Sep-13	41	54,913	1,326				
Oct-13	37	63,144	1,730	Oct-13	173	438,639	2,535	Oct-13	41	63,450	1,531				
Nov-13	37	67,527	1,847	Nov-13	173	556,429	3,216	Nov-13	41	68,648	1,654				
Dec-13	37	73,111	1,997	Dec-13	173	604,658	3,495	Dec-13	42	89,782	2,161				
Jan-14	37	92,471	2,522	Jan-14	173	682,740	3,941	Jan-14	42	91,331	2,196				
Feb-14	37	73,873	2,012	Feb-14	173	588,138	3,391	Feb-14	42	79,051	1,898				
Mar-14	37	76,855	2,090	Mar-14	174	603,395	3,475	Mar-14	42	84,780	2,034				
Apr-14	37	59,605	1,618	Apr-14	174	543,857	3,128	Apr-14	42	85,569	2,050				
May-14	37	70,064	1,899	May-14	174	469,390	2,696	May-14	42	69,378	1,660				
Jun-14	37	78,318	2,120	Jun-14	174	442,139	2,536	Jun-14	42	68,523	1,638				
Jul-14	37	82,666	2,234	Jul-14	175	432,946	2,481	Jul-14	42	58,294	1,392				
Aug-14	37	86,974	2,347	Aug-14	175	413,171	2,364	Aug-14	42	60,178	1,435				
Sep-14	37	69,076	1,861	Sep-14	175	471,708	2,696	Sep-14	42	55,685	1,326				
Oct-14	37	64,288	1,730	Oct-14	175	444,194	2,535	Oct-14	42	64,348	1,531				
Nov-14	37	68,758	1,847	Nov-14	175	564,181	3,216	Nov-14	42	69,627	1,654				
Dec-14	37	74,453	1,997	Dec-14	176	613,847	3,495	Dec-14	42	91,071	2,161				
Jan-15	37	94,170	2,522	Jan-15	176	692,466	3,941	Jan-15	42	92,657	2,196				
Feb-15	37	75,257	2,012	Feb-15	176	597,266	3,391	Feb-15	42	80,210	1,898				
Mar-15	37	78,292	2,090	Mar-15	176	612,748	3,475	Mar-15	42	86,022	2,034				
Apr-15	38	60,718	1,618	Apr-15	177	552,276	3,128	Apr-15	42	86,821	2,050				
May-15	38	71,370	1,899	May-15	177	476,648	2,696	May-15	42	70,392	1,660				
Jun-15	38	79,777	2,120	Jun-15	177	448,967	2,536	Jun-15	42	69,523	1,638				
Jul-15	38	84,203	2,234	Jul-15	177	439,623	2,481	Jul-15	42	59,143	1,392				
Aug-15	38	88,588	2,347	Aug-15	177	419,536	2,364	Aug-15	43	61,054	1,435				
Sep-15	38	70,356	1,861	Sep-15	178	478,965	2,696	Sep-15	43	56,495	1,326				
Oct-15	38	65,478	1,730	Oct-15	178	451,019	2,535	Oct-15	43	65,283	1,531				
Nov-15	38	70,029	1,847	Nov-15	178	572,839	3,216	Nov-15	43	70,637	1,654				
Dec-15	38	75,827	1,997	Dec-15	178	623,255	3,495	Dec-15	43	92,391	2,161				
	Customers	Energy	Avg UPC		Customers (ann Fcst)	Energy (kWh)	Avg UPC		Customers	Energy	Avg UPC				
2013-F	36	881,817	24,273	2013-F	173	6,221,065	35,956	2013-F	41	865,896	20,970				
2014-F	37	897,400	24,272	2014-F	174	6,269,708	35,945	2014-F	42	877,835	20,969				
2015-F	38	914,066	24,272	2015-F	177	6,365,608	35,944	2015-F	42	890,628	20,969				

**Yukon Electrical Company Limited
2013 - 2015 General Rate Application**

Keno City				Stewart Crossing				Lower Post BC			
Commercial		Energy (kWh)		Residential		Energy (kWh)		Commercial		Energy (kWh)	
monthly	Customers	(Billed)	UPC (kWh)	monthly	Customers	(Billed)	UPC (kWh)	monthly	Customers	(Billed)	UPC (kWh)
Jan-08	11	19,277	1,752	Jan-08	15	36,240	2,416	Jan-08	12	20,658	1,722
Feb-08	11	19,144	1,740	Feb-08	14	44,894	3,207	Feb-08	12	20,430	1,703
Mar-08	11	14,851	1,350	Mar-08	14	28,784	2,056	Mar-08	12	19,032	1,586
Apr-08	11	9,727	884	Apr-08	14	16,642	1,189	Apr-08	12	19,402	1,617
May-08	11	5,882	535	May-08	15	26,842	1,789	May-08	12	16,739	1,395
Jun-08	11	4,866	442	Jun-08	14	19,982	1,427	Jun-08	11	9,833	894
Jul-08	11	5,426	493	Jul-08	14	13,104	936	Jul-08	13	9,117	701
Aug-08	12	6,258	522	Aug-08	14	19,541	1,396	Aug-08	13	8,646	665
Sep-08	11	5,385	490	Sep-08	15	15,633	1,042	Sep-08	15	10,710	714
Oct-08	11	4,558	414	Oct-08	14	20,461	1,462	Oct-08	13	12,541	965
Nov-08	11	7,196	654	Nov-08	14	25,597	1,828	Nov-08	13	16,435	1,264
Dec-08	11	7,448	677	Dec-08	13	26,703	2,054	Dec-08	13	20,043	1,542
Jan-09	12	14,606	1,217	Jan-09	11	36,807	3,346	Jan-09	13	24,397	1,877
Feb-09	11	9,932	903	Feb-09	14	36,052	2,575	Feb-09	12	19,373	1,614
Mar-09	12	11,109	926	Mar-09	14	27,967	1,998	Mar-09	13	20,139	1,549
Apr-09	12	13,738	1,145	Apr-09	15	25,031	1,669	Apr-09	13	18,011	1,385
May-09	12	10,971	914	May-09	15	19,941	1,329	May-09	13	13,818	1,063
Jun-09	12	7,822	652	Jun-09	14	16,842	1,203	Jun-09	13	12,242	942
Jul-09	12	3,779	315	Jul-09	13	18,775	1,444	Jul-09	13	12,620	971
Aug-09	12	6,962	580	Aug-09	14	17,707	1,265	Aug-09	13	10,974	844
Sep-09	12	6,283	524	Sep-09	14	16,260	1,161	Sep-09	14	14,572	1,041
Oct-09	12	6,629	552	Oct-09	15	19,057	1,270	Oct-09	14	15,466	1,105
Nov-09	12	8,182	682	Nov-09	15	20,545	1,370	Nov-09	15	20,437	1,362
Dec-09	12	7,687	641	Dec-09	15	24,637	1,642	Dec-09	15	26,563	1,771
Jan-10	12	9,754	813	Jan-10	10	25,358	2,536	Jan-10	15	32,126	2,142
Feb-10	12	7,471	623	Feb-10	13	26,715	2,055	Feb-10	14	24,626	1,759
Mar-10	12	21,058	1,755	Mar-10	13	23,031	1,772	Mar-10	14	23,598	1,686
Apr-10	12	13,505	1,125	Apr-10	13	22,521	1,732	Apr-10	15	22,159	1,477
May-10	12	4,195	350	May-10	11	17,272	1,570	May-10	15	14,719	981
Jun-10	12	6,250	521	Jun-10	13	14,021	1,079	Jun-10	15	13,642	909
Jul-10	12	6,012	501	Jul-10	12	14,894	1,241	Jul-10	15	12,079	805
Aug-10	12	5,785	482	Aug-10	12	15,434	1,286	Aug-10	15	10,519	701
Sep-10	12	7,396	616	Sep-10	11	15,516	1,411	Sep-10	13	9,895	761
Oct-10	12	6,470	539	Oct-10	14	33,981	2,427	Oct-10	11	10,514	956
Nov-10	12	8,609	717	Nov-10	16	27,780	1,736	Nov-10	14	30,914	2,208
Dec-10	12	9,265	772	Dec-10	16	33,270	2,079	Dec-10	13	24,941	1,919
Jan-11	12	12,956	1,080	Jan-11	16	37,114	2,320	Jan-11	13	25,325	1,948
Feb-11	12	10,034	836	Feb-11	16	32,155	2,010	Feb-11	12	18,667	1,556
Mar-11	12	10,436	870	Mar-11	16	35,227	2,202	Mar-11	12	23,229	1,936
Apr-11	12	14,435	1,203	Apr-11	15	23,627	1,575	Apr-11	12	16,035	1,336
May-11	12	14,749	1,229	May-11	14	21,575	1,541	May-11	12	12,800	1,067
Jun-11	12	13,170	1,098	Jun-11	14	16,071	1,148	Jun-11	12	14,218	1,185
Jul-11	12	8,117	676	Jul-11	15	16,872	1,125	Jul-11	12	9,863	822
Aug-11	12	18,860	1,572	Aug-11	16	18,348	1,147	Aug-11	12	11,714	976
Sep-11	13	6,064	466	Sep-11	16	20,879	1,305	Sep-11	13	14,390	1,107
Nov-11	13	21,125	1,625	Nov-11	16	18,378	1,149	Nov-11	13	17,891	1,376
Nov-11	13	12,407	954	Nov-11	16	24,599	1,537	Nov-11	13	23,053	1,773
Dec-11	13	8,980	691	Dec-11	13	26,291	2,022	Dec-11	13	25,053	1,927
Jan-12	13	26,504	2,039	Jan-12	14	34,076	2,434	Jan-12	13	31,371	2,413
Feb-12	13	14,215	1,093	Feb-12	14	26,323	1,880	Feb-12	13	26,952	2,073
Mar-12	13	16,764	1,290	Mar-12	13	40,429	3,110	Mar-12	14	26,567	1,898
Apr-12	13	14,064	1,082	Apr-12	13	9,050	696	Apr-12	14	23,101	1,650
May-12	13	8,864	682	May-12	9	14,773	1,641	May-12	14	19,762	1,412
Jun-12	12	10,133	844	Jun-12	13	22,093	1,699	Jun-12	14	18,378	1,313
Jul-12	13	1,565	120	Jul-12	13	16,595	1,277	Jul-12	14	16,520	1,180
Aug-12	13	5,589	430	Aug-12	13	14,994	1,153	Aug-12	14	16,064	1,147
Sep-12	13	6,240	480	Sep-12	13	13,689	1,053	Sep-12	14	15,662	1,119
Oct-12	13	5,779	445	Oct-12	13	17,805	1,370	Oct-12	14	20,696	1,478
Nov-12	13	8,695	669	Nov-12	13	30,666	2,359	Nov-12	14	22,725	1,623
Dec-12	12	7,198	600	Dec-12	13	23,891	1,838	Dec-12	14	30,647	2,189

**Yukon Electrical Company Limited
2013 - 2015 General Rate Application**

Keno City			
Commercial		Energy (kWh)	
monthly	Customers	(Billed)	UPC (kWh)
Jan-13	12	15,744	1,310
Feb-13	12	10,233	851
Mar-13	12	15,712	1,305
Apr-13	12	13,706	1,137
May-13	12	9,096	754
Jun-13	12	9,921	821
Jul-13	12	5,234	433
Aug-13	12	10,029	828
Sep-13	12	6,318	521
Oct-13	12	10,559	870
Nov-13	12	9,485	780
Dec-13	12	8,368	688
Jan-14	12	15,970	1,310
Feb-14	12	10,381	851
Mar-14	12	15,941	1,305
Apr-14	12	13,907	1,137
May-14	12	9,230	754
Jun-14	12	10,069	821
Jul-14	12	5,313	433
Aug-14	12	10,181	828
Sep-14	12	6,414	521
Oct-14	12	10,720	870
Nov-14	12	9,631	780
Dec-14	12	8,498	688
Jan-15	12	16,272	1,310
Feb-15	12	10,546	851
Mar-15	12	16,193	1,305
Apr-15	12	14,127	1,137
May-15	12	9,376	754
Jun-15	12	10,228	821
Jul-15	12	5,397	433
Aug-15	12	10,341	828
Sep-15	13	6,515	521
Oct-15	13	10,889	870
Nov-15	13	9,782	780
Dec-15	13	8,631	688
	Customers	Energy	Avg UPC
2013-F	12	124,405	10,288
2014-F	12	126,255	10,287
2015-F	12	128,296	10,288

Stewart Crossing			
Residential		Energy (kWh)	
monthly	Customers	(Billed)	UPC (kWh)
Jan-13	13	31,622	2,430
Feb-13	13	25,818	1,982
Mar-13	13	30,795	2,361
Apr-13	13	17,425	1,335
May-13	13	20,708	1,584
Jun-13	13	17,124	1,309
Jul-13	13	15,905	1,214
Aug-13	13	15,677	1,195
Sep-13	13	16,491	1,256
Oct-13	13	21,665	1,648
Nov-13	13	24,702	1,878
Dec-13	13	26,077	1,980
Jan-14	13	32,041	2,430
Feb-14	13	26,163	1,982
Mar-14	13	31,209	2,361
Apr-14	13	17,662	1,335
May-14	13	20,991	1,584
Jun-14	13	17,360	1,309
Jul-14	13	16,126	1,214
Aug-14	13	15,896	1,195
Sep-14	13	16,723	1,256
Oct-14	13	21,972	1,648
Nov-14	13	25,054	1,878
Dec-14	13	26,451	1,980
Jan-15	13	32,602	2,430
Feb-15	13	26,546	1,982
Mar-15	13	31,666	2,361
Apr-15	13	17,920	1,335
May-15	13	21,297	1,584
Jun-15	13	17,613	1,309
Jul-15	13	16,361	1,214
Aug-15	13	16,127	1,195
Sep-15	14	16,966	1,256
Oct-15	14	22,291	1,648
Nov-15	14	25,418	1,878
Dec-15	14	26,834	1,980
	Customers	Energy	Avg UPC
2013-F	13	264,010	20,165
2014-F	13	267,646	20,164
2015-F	13	271,640	20,166

Lower Post BC			
Commercial		Energy (kWh)	
monthly	Customers	(Billed)	UPC (kWh)
Jan-13	14	30,381	2,168
Feb-13	14	24,872	1,796
Mar-13	14	26,098	1,840
Apr-13	14	21,107	1,488
May-13	14	16,359	1,153
Jun-13	14	16,111	1,136
Jul-13	14	13,274	936
Aug-13	14	13,358	942
Sep-13	14	14,124	996
Oct-13	14	18,018	1,270
Nov-13	14	26,503	1,868
Dec-13	14	28,537	2,012
Jan-14	14	30,788	2,168
Feb-14	14	25,539	1,796
Mar-14	14	26,192	1,840
Apr-14	14	21,209	1,488
May-14	14	16,458	1,153
Jun-14	14	16,228	1,136
Jul-14	14	13,387	936
Aug-14	14	13,487	942
Sep-14	14	14,277	996
Oct-14	14	18,236	1,270
Nov-14	14	26,855	1,868
Dec-14	14	28,951	2,012
Jan-15	14	31,321	2,168
Feb-15	14	25,918	1,796
Mar-15	14	26,580	1,840
Apr-15	14	21,523	1,488
May-15	14	16,701	1,153
Jun-15	14	16,467	1,136
Jul-15	15	13,584	936
Aug-15	15	13,686	942
Sep-15	15	14,487	996
Oct-15	15	18,503	1,270
Nov-15	15	27,249	1,868
Dec-15	15	29,375	2,012
	Customers	Energy	Avg UPC
2013-F	14	248,741	17,587
2014-F	14	251,608	17,598
2015-F	15	255,393	17,600

**Yukon Electrical Company Limited
2013 - 2015 General Rate Application**

Ross River				Pelly Crossing				Swift River			
Commercial		Energy (kWh)		Commercial		Energy (kWh)		Commercial		Energy (kWh)	
monthly	Customers	(Billed)	UPC (kWh)	monthly	Customers	(Billed)	UPC (kWh)	monthly	Customers	(Billed)	UPC (kWh)
Jan-08	46	114,224	2,483	Jan-08	29	90,812	3,131	Jan-08	13	26,310	2,024
Feb-08	46	146,930	3,194	Feb-08	29	108,137	3,729	Feb-08	13	21,945	1,688
Mar-08	43	104,852	2,438	Mar-08	29	81,804	2,821	Mar-08	13	18,796	1,446
Apr-08	46	97,281	2,115	Apr-08	29	59,285	2,044	Apr-08	13	20,063	1,543
May-08	46	106,530	2,316	May-08	30	75,053	2,502	May-08	13	15,812	1,216
Jun-08	46	80,827	1,757	Jun-08	29	58,602	2,021	Jun-08	13	12,746	980
Jul-08	46	71,189	1,548	Jul-08	30	44,911	1,497	Jul-08	13	12,899	992
Aug-08	46	83,888	1,824	Aug-08	30	60,469	2,016	Aug-08	13	13,740	1,057
Sep-08	46	84,846	1,844	Sep-08	30	65,290	2,176	Sep-08	13	12,483	960
Oct-08	46	93,934	2,042	Oct-08	30	89,703	2,990	Oct-08	13	13,163	1,013
Nov-08	46	96,656	2,101	Nov-08	30	81,690	2,723	Nov-08	13	21,162	1,628
Dec-08	46	125,362	2,725	Dec-08	30	73,897	2,463	Dec-08	13	20,924	1,610
Jan-09	45	137,387	3,053	Jan-09	29	85,513	2,949	Jan-09	12	23,479	1,957
Feb-09	46	94,202	2,048	Feb-09	29	65,603	2,262	Feb-09	13	21,573	1,659
Mar-09	46	119,217	2,592	Mar-09	29	111,365	3,840	Mar-09	13	24,221	1,863
Apr-09	46	101,227	2,201	Apr-09	28	82,326	2,940	Apr-09	13	17,441	1,342
May-09	46	90,002	1,957	May-09	30	131,105	4,370	May-09	13	14,149	1,088
Jun-09	46	77,208	1,678	Jun-09	30	68,339	2,278	Jun-09	13	11,604	893
Jul-09	46	75,007	1,631	Jul-09	31	74,106	2,391	Jul-09	12	12,459	1,038
Aug-09	46	89,016	1,935	Aug-09	32	60,731	1,898	Aug-09	13	12,475	960
Sep-09	46	50,462	1,097	Sep-09	31	77,585	2,503	Sep-09	13	12,245	942
Oct-09	46	100,197	2,178	Oct-09	30	75,941	2,531	Oct-09	13	11,214	863
Nov-09	46	88,146	1,916	Nov-09	31	90,630	2,924	Nov-09	13	18,184	1,399
Dec-09	46	120,466	2,619	Dec-09	31	82,561	2,663	Dec-09	13	16,676	1,283
Jan-10	46	137,669	2,993	Jan-10	29	105,601	3,641	Jan-10	12	20,342	1,695
Feb-10	47	113,244	2,409	Feb-10	31	87,952	2,837	Feb-10	12	16,017	1,335
Mar-10	46	115,089	2,502	Mar-10	30	84,203	2,807	Mar-10	14	15,800	1,129
Apr-10	45	112,834	2,507	Apr-10	31	90,283	2,912	Apr-10	12	11,941	995
May-10	45	79,657	1,770	May-10	30	71,896	2,397	May-10	14	13,788	985
Jun-10	45	85,169	1,893	Jun-10	31	72,670	2,344	Jun-10	15	5,934	396
Jul-10	45	86,646	1,925	Jul-10	30	73,172	2,439	Jul-10	15	6,425	428
Aug-10	46	85,599	1,861	Aug-10	32	70,189	2,193	Aug-10	14	8,304	593
Sep-10	46	82,613	1,796	Sep-10	26	65,567	2,522	Sep-10	11	9,447	859
Oct-10	46	89,508	1,946	Oct-10	31	96,555	3,115	Oct-10	13	10,679	821
Nov-10	46	96,741	2,103	Nov-10	31	138,307	4,462	Nov-10	13	18,199	1,400
Dec-10	46	123,366	2,682	Dec-10	30	62,920	2,097	Dec-10	14	18,494	1,321
Jan-11	46	136,826	2,974	Jan-11	29	129,575	4,468	Jan-11	13	21,181	1,629
Feb-11	45	114,211	2,538	Feb-11	29	100,874	3,478	Feb-11	14	17,628	1,259
Mar-11	46	107,244	2,331	Mar-11	28	102,885	3,674	Mar-11	14	20,929	1,495
Apr-11	45	109,005	2,422	Apr-11	29	92,837	3,201	Apr-11	14	15,964	1,140
May-11	44	78,303	1,780	May-11	30	104,604	3,487	May-11	14	10,835	774
Jun-11	44	73,675	1,674	Jun-11	30	69,469	2,316	Jun-11	14	9,352	668
Jul-11	43	78,956	1,836	Jul-11	29	77,856	2,685	Jul-11	14	8,736	624
Aug-11	43	74,081	1,723	Aug-11	30	70,242	2,341	Aug-11	14	10,780	770
Sep-11	45	80,053	1,779	Sep-11	29	82,164	2,833	Sep-11	14	9,790	699
Nov-11	46	80,189	1,743	Nov-11	29	72,958	2,516	Nov-11	14	14,352	1,025
Nov-11	47	89,330	1,901	Nov-11	27	89,845	3,328	Nov-11	14	16,597	1,186
Dec-11	47	93,650	1,993	Dec-11	28	82,380	2,942	Dec-11	14	17,469	1,248
Jan-12	47	175,496	3,734	Jan-12	29	122,556	4,226	Jan-12	14	23,487	1,678
Feb-12	49	132,363	2,701	Feb-12	27	85,292	3,159	Feb-12	14	17,642	1,260
Mar-12	49	145,810	2,976	Mar-12	28	101,698	3,632	Mar-12	14	17,026	1,216
Apr-12	47	101,554	2,161	Apr-12	28	79,907	2,854	Apr-12	14	16,382	1,170
May-12	50	100,742	2,015	May-12	29	75,037	2,587	May-12	14	12,813	915
Jun-12	50	103,358	2,067	Jun-12	26	74,738	2,875	Jun-12	14	12,781	913
Jul-12	51	90,261	1,770	Jul-12	29	62,125	2,142	Jul-12	14	10,368	741
Aug-12	50	97,662	1,953	Aug-12	29	70,267	2,423	Aug-12	14	12,957	926
Sep-12	50	86,122	1,722	Sep-12	29	68,366	2,357	Sep-12	14	10,066	719
Oct-12	48	98,996	2,062	Oct-12	28	76,625	2,737	Oct-12	14	14,818	1,058
Nov-12	48	124,903	2,602	Nov-12	28	119,676	4,274	Nov-12	14	17,318	1,237
Dec-12	47	119,613	2,545	Dec-12	28	88,012	3,143	Dec-12	14	18,437	1,317

**Yukon Electrical Company Limited
2013 - 2015 General Rate Application**

Ross River				Pelly Crossing				Swift River			
Commercial		Energy (kWh)		Commercial		Energy (kWh)		Commercial		Energy (kWh)	
monthly	Customers	(Billed)	UPC (kWh)	monthly	Customers	(Billed)	UPC (kWh)	monthly	Customers	(Billed)	UPC (kWh)
Jan-13	47	152,162	3,234	Jan-13	28	115,261	4,112	Jan-13	14	23,369	1,667
Feb-13	47	120,108	2,550	Feb-13	28	88,627	3,158	Feb-13	14	18,025	1,285
Mar-13	47	122,767	2,603	Mar-13	28	94,708	3,371	Mar-13	14	17,978	1,280
Apr-13	47	111,599	2,363	Apr-13	28	84,071	2,989	Apr-13	14	15,494	1,102
May-13	47	87,684	1,855	May-13	28	79,504	2,824	May-13	14	12,548	891
Jun-13	47	88,883	1,878	Jun-13	28	70,793	2,511	Jun-13	14	9,285	659
Jul-13	47	87,363	1,844	Jul-13	28	68,347	2,422	Jul-13	14	8,432	598
Aug-13	47	87,549	1,846	Aug-13	28	65,521	2,319	Aug-13	14	10,775	763
Sep-13	47	83,857	1,766	Sep-13	28	72,709	2,571	Sep-13	14	10,732	759
Oct-13	48	91,151	1,917	Oct-13	28	78,967	2,789	Oct-13	14	13,707	968
Nov-13	48	104,811	2,202	Nov-13	28	113,977	4,021	Nov-13	14	18,055	1,274
Dec-13	48	114,676	2,406	Dec-13	28	77,399	2,728	Dec-13	14	18,375	1,295
Jan-14	48	154,294	3,234	Jan-14	28	116,821	4,112	Jan-14	14	23,682	1,667
Feb-14	48	121,804	2,550	Feb-14	28	89,836	3,158	Feb-14	14	18,269	1,285
Mar-14	48	124,513	2,603	Mar-14	28	96,009	3,371	Mar-14	14	18,222	1,280
Apr-14	48	113,198	2,363	Apr-14	29	85,235	2,989	Apr-14	14	15,706	1,102
May-14	48	88,950	1,855	May-14	29	80,612	2,824	May-14	14	12,721	891
Jun-14	48	90,176	1,878	Jun-14	29	71,788	2,511	Jun-14	14	9,414	659
Jul-14	48	88,642	1,844	Jul-14	29	69,315	2,422	Jul-14	14	8,550	598
Aug-14	48	88,840	1,846	Aug-14	29	66,455	2,319	Aug-14	14	10,927	763
Sep-14	48	85,102	1,766	Sep-14	29	73,752	2,571	Sep-14	14	10,885	759
Oct-14	48	92,514	1,917	Oct-14	29	80,108	2,789	Oct-14	14	13,903	968
Nov-14	48	106,389	2,202	Nov-14	29	115,636	4,021	Nov-14	14	18,316	1,274
Dec-14	48	116,415	2,406	Dec-14	29	78,533	2,728	Dec-14	14	18,641	1,295
Jan-15	48	156,621	3,234	Jan-15	29	118,624	4,112	Jan-15	14	24,092	1,667
Feb-15	49	123,690	2,550	Feb-15	29	91,180	3,158	Feb-15	14	18,539	1,285
Mar-15	49	126,438	2,603	Mar-15	29	97,445	3,371	Mar-15	14	18,492	1,280
Apr-15	49	114,946	2,363	Apr-15	29	86,508	2,989	Apr-15	14	15,939	1,102
May-15	49	90,321	1,855	May-15	29	81,814	2,824	May-15	14	12,909	891
Jun-15	49	91,565	1,878	Jun-15	29	72,857	2,511	Jun-15	14	9,553	659
Jul-15	49	90,006	1,844	Jul-15	29	70,346	2,422	Jul-15	15	8,676	598
Aug-15	49	90,205	1,846	Aug-15	29	67,442	2,319	Aug-15	15	11,088	763
Sep-15	49	86,408	1,766	Sep-15	29	74,847	2,571	Sep-15	15	11,045	759
Oct-15	49	93,932	1,917	Oct-15	29	81,296	2,789	Oct-15	15	14,107	968
Nov-15	49	108,018	2,202	Nov-15	29	117,347	4,021	Nov-15	15	18,584	1,274
Dec-15	49	118,195	2,406	Dec-15	29	79,694	2,728	Dec-15	15	18,914	1,295
	Customers	Energy	Avg UPC		Customers	Energy	Avg UPC		Customers	Energy	Avg UPC
2013-F	47	1,252,611	26,452	2013-F	28	1,009,884	35,807	2013-F	14	176,776	12,537
2014-F	48	1,270,836	26,451	2014-F	29	1,024,101	35,806	2014-F	14	179,237	12,536
2015-F	49	1,290,344	26,451	2015-F	29	1,039,400	35,807	2015-F	15	181,938	12,538

**Yukon Electrical Company Limited
2013 - 2015 General Rate Application**

Tagish				Marsh Lake				Deep Creek			
Commercial		Energy (kWh)		Commercial		Energy (kWh)		Commercial		Energy (kWh)	
monthly	Customers	(Billed)	UPC (kWh)	monthly	Customers	(Billed)	UPC (kWh)	monthly	Customers	(Billed)	UPC (kWh)
Jan-08	22	25,254	1,148	Jan-08	25	31,098	1,244	Jan-08	2	4,794	2,397
Feb-08	22	36,477	1,658	Feb-08	25	31,587	1,263	Feb-08	2	5,740	2,870
Mar-08	22	24,544	1,116	Mar-08	25	28,784	1,151	Mar-08	2	3,936	1,968
Apr-08	25	26,422	1,057	Apr-08	25	27,459	1,098	Apr-08	2	3,899	1,950
May-08	20	18,392	920	May-08	25	19,607	784	May-08	2	3,432	1,716
Jun-08	20	11,850	593	Jun-08	23	19,010	827	Jun-08	2	2,148	1,074
Jul-08	21	13,042	621	Jul-08	22	16,652	757	Jul-08	2	1,641	821
Aug-08	22	16,086	731	Aug-08	22	20,030	910	Aug-08	2	1,278	639
Sep-08	23	13,294	578	Sep-08	24	17,252	719	Sep-08	2	1,475	738
Oct-08	23	19,118	831	Oct-08	24	19,263	803	Oct-08	2	1,702	851
Nov-08	23	23,771	1,034	Nov-08	24	28,419	1,184	Nov-08	2	3,834	1,917
Dec-08	22	23,705	1,078	Dec-08	23	32,895	1,430	Dec-08	2	5,661	2,831
Jan-09	19	21,201	1,116	Jan-09	24	33,441	1,393	Jan-09	2	6,706	3,353
Feb-09	23	29,194	1,269	Feb-09	24	27,733	1,156	Feb-09	2	6,706	3,353
Mar-09	23	23,077	1,003	Mar-09	21	34,092	1,623	Mar-09	2	7,274	3,637
Apr-09	23	24,157	1,050	Apr-09	23	11,189	486	Apr-09	2	5,558	2,779
May-09	24	19,435	810	May-09	24	17,663	736	May-09	2	4,558	2,279
Jun-09	22	15,296	695	Jun-09	22	15,389	700	Jun-09	2	3,333	1,667
Jul-09	22	17,049	775	Jul-09	21	16,891	804	Jul-09	2	3,144	1,572
Aug-09	22	16,109	732	Aug-09	21	15,895	757	Aug-09	2	2,038	1,019
Sep-09	22	15,861	721	Sep-09	21	17,977	856	Sep-09	2	2,841	1,421
Oct-09	25	18,091	724	Oct-09	22	17,834	811	Oct-09	2	3,052	1,526
Nov-09	23	20,494	891	Nov-09	24	22,189	925	Nov-09	2	5,245	2,623
Dec-09	24	25,196	1,050	Dec-09	23	27,937	1,215	Dec-09	2	4,552	2,276
Jan-10	24	31,495	1,312	Jan-10	24	27,159	1,132	Jan-10	2	6,121	3,061
Feb-10	23	20,170	877	Feb-10	24	21,898	912	Feb-10	2	4,582	2,291
Mar-10	24	28,603	1,192	Mar-10	24	23,726	989	Mar-10	1	679	679
Apr-10	23	25,020	1,088	Apr-10	24	21,966	915	Apr-10	1	670	670
May-10	21	19,528	930	May-10	24	20,304	846	May-10	2	9,364	4,682
Jun-10	23	17,417	757	Jun-10	23	15,146	659	Jun-10	2	1,511	756
Jul-10	22	15,016	683	Jul-10	23	21,412	931	Jul-10	2	1,598	799
Aug-10	22	13,970	635	Aug-10	21	19,031	906	Aug-10	2	1,204	602
Sep-10	19	11,790	621	Sep-10	15	9,032	602	Sep-10	2	1,938	969
Oct-10	21	17,435	830	Oct-10	21	34,961	1,665	Oct-10	2	2,135	1,068
Nov-10	24	21,669	903	Nov-10	22	28,599	1,300	Nov-10	2	3,122	1,561
Dec-10	23	23,950	1,041	Dec-10	23	32,912	1,431	Dec-10	2	3,200	1,600
Jan-11	23	30,030	1,306	Jan-11	23	39,956	1,737	Jan-11	2	4,248	2,124
Feb-11	24	25,614	1,067	Feb-11	23	28,861	1,255	Feb-11	2	7,299	3,650
Mar-11	24	25,395	1,058	Mar-11	22	35,924	1,633	Mar-11	2	5,654	2,827
Apr-11	25	31,050	1,242	Apr-11	20	32,403	1,620	Apr-11	2	5,959	2,980
May-11	26	33,448	1,286	May-11	22	22,563	1,026	May-11	2	2,657	1,329
Jun-11	26	18,024	693	Jun-11	22	21,583	981	Jun-11	2	1,945	973
Jul-11	23	13,595	591	Jul-11	21	17,059	812	Jul-11	2	1,710	855
Aug-11	23	13,512	587	Aug-11	22	18,617	846	Aug-11	2	1,339	670
Sep-11	23	12,778	556	Sep-11	21	19,857	946	Sep-11	2	1,751	876
Nov-11	25	15,944	638	Nov-11	23	21,173	921	Nov-11	2	2,356	1,178
Nov-11	24	16,744	698	Nov-11	23	27,688	1,204	Nov-11	2	3,144	1,572
Dec-11	24	26,166	1,090	Dec-11	23	36,375	1,582	Dec-11	2	3,691	1,846
Jan-12	23	32,209	1,400	Jan-12	23	34,562	1,503	Jan-12	2	6,000	3,000
Feb-12	23	16,604	722	Feb-12	23	36,303	1,578	Feb-12	2	6,066	3,033
Mar-12	23	25,466	1,107	Mar-12	23	30,477	1,325	Mar-12	2	5,560	2,780
Apr-12	19	16,598	874	Apr-12	23	27,482	1,195	Apr-12	2	5,131	2,566
May-12	23	15,970	694	May-12	23	29,931	1,301	May-12	2	3,362	1,681
Jun-12	23	15,204	661	Jun-12	23	21,150	920	Jun-12	2	3,128	1,564
Jul-12	24	18,891	787	Jul-12	24	20,492	854	Jul-12	2	1,665	833
Aug-12	24	16,045	669	Aug-12	24	23,435	976	Aug-12	2	1,683	842
Sep-12	24	13,882	578	Sep-12	24	21,046	877	Sep-12	2	1,961	981
Oct-12	24	15,813	659	Oct-12	24	24,365	1,015	Oct-12	2	1,803	902
Nov-12	24	22,753	948	Nov-12	25	35,412	1,416	Nov-12	2	2,457	1,229
Dec-12	24	22,475	936	Dec-12	25	39,253	1,570	Dec-12	2	3,829	1,915

**Yukon Electrical Company Limited
2013 - 2015 General Rate Application**

Tagish

Commercial			
monthly	Customers	Energy (kWh)	
		(Billed)	UPC (kWh)
Jan-13	24	32,181	1,339
Feb-13	24	21,375	889
Mar-13	24	26,944	1,119
Apr-13	24	25,738	1,068
May-13	24	23,412	970
Jun-13	24	17,002	704
Jul-13	24	16,611	687
Aug-13	24	15,259	630
Sep-13	24	14,173	585
Oct-13	24	17,199	709
Nov-13	24	20,631	850
Dec-13	24	24,863	1,023
Jan-14	24	32,602	1,339
Feb-14	24	21,657	889
Mar-14	24	27,302	1,119
Apr-14	24	26,083	1,068
May-14	24	23,727	970
Jun-14	24	17,233	704
Jul-14	25	16,838	687
Aug-14	25	15,469	630
Sep-14	25	14,369	585
Oct-14	25	17,439	709
Nov-14	25	20,922	850
Dec-14	25	25,215	1,023
Jan-15	25	33,102	1,339
Feb-15	25	21,970	889
Mar-15	25	27,697	1,119
Apr-15	25	26,459	1,068
May-15	25	24,069	970
Jun-15	25	17,481	704
Jul-15	25	17,080	687
Aug-15	25	15,692	630
Sep-15	25	14,576	585
Oct-15	25	17,689	709
Nov-15	25	21,221	850
Dec-15	25	25,576	1,023
Customers	Energy	Avg UPC	
2013-F	24	255,389	10,567
2014-F	24	258,857	10,566
2015-F	25	262,612	10,567

Marsh Lake

Commercial			
monthly	Customers	Energy (kWh)	
		(Billed)	UPC (kWh)
Jan-13	25	36,468	1,457
Feb-13	25	31,279	1,249
Mar-13	25	32,992	1,316
Apr-13	25	31,216	1,243
May-13	25	26,580	1,058
Jun-13	25	21,461	853
Jul-13	25	21,802	866
Aug-13	25	22,932	910
Sep-13	25	20,396	808
Oct-13	25	30,320	1,200
Nov-13	25	33,047	1,307
Dec-13	25	38,670	1,528
Jan-14	25	36,931	1,457
Feb-14	25	31,680	1,249
Mar-14	25	33,418	1,316
Apr-14	25	31,622	1,243
May-14	25	26,928	1,058
Jun-14	25	21,744	853
Jul-14	26	22,092	866
Aug-14	26	23,239	910
Sep-14	26	20,671	808
Oct-14	26	30,732	1,200
Nov-14	26	33,499	1,307
Dec-14	26	39,203	1,528
Jan-15	26	37,481	1,457
Feb-15	26	32,126	1,249
Mar-15	26	33,887	1,316
Apr-15	26	32,066	1,243
May-15	26	27,306	1,058
Jun-15	26	22,048	853
Jul-15	26	22,401	866
Aug-15	26	23,564	910
Sep-15	26	20,960	808
Oct-15	26	31,160	1,200
Nov-15	26	33,965	1,307
Dec-15	26	39,748	1,528
Customers	Energy	Avg UPC	
2013-F	25	347,164	13,792
2014-F	26	351,759	13,792
2015-F	26	356,711	13,792

Deep Creek

Commercial			
monthly	Customers	Energy (kWh)	
		(Billed)	UPC (kWh)
Jan-13	2	5,462	2,728
Feb-13	2	5,996	2,991
Mar-13	2	4,205	2,095
Apr-13	2	4,162	2,072
May-13	2	5,156	2,564
Jun-13	2	2,209	1,097
Jul-13	2	1,671	829
Aug-13	2	1,421	704
Sep-13	2	1,902	942
Oct-13	2	2,121	1,049
Nov-13	2	2,943	1,454
Dec-13	2	3,621	1,787
Jan-14	2	5,536	2,728
Feb-14	2	6,077	2,991
Mar-14	2	4,262	2,095
Apr-14	2	4,219	2,072
May-14	2	5,227	2,564
Jun-14	2	2,240	1,097
Jul-14	2	1,694	829
Aug-14	2	1,441	704
Sep-14	2	1,929	942
Oct-14	2	2,152	1,049
Nov-14	2	2,986	1,454
Dec-14	2	3,673	1,787
Jan-15	2	5,766	2,728
Feb-15	2	6,167	2,991
Mar-15	2	4,325	2,095
Apr-15	2	4,281	2,072
May-15	2	5,304	2,564
Jun-15	2	2,273	1,097
Jul-15	2	1,719	829
Aug-15	2	1,462	704
Sep-15	2	1,957	942
Oct-15	2	2,183	1,049
Nov-15	2	3,029	1,454
Dec-15	2	3,727	1,787
Customers	Energy	Avg UPC	
2013-F	2	40,869	20,288
2014-F	2	41,435	20,286
2015-F	2	42,194	20,313

**Yukon Electrical Company Limited
2013 - 2015 General Rate Application**

Minto Landing			
Commercial			
monthly	Customers	Energy (kWh)	
		(Billed)	UPC (kWh)
Jan-13	3	5,201	1,719
Feb-13	3	5,842	1,915
Mar-13	3	5,557	1,807
Apr-13	3	5,547	1,789
May-13	3	7,219	2,309
Jun-13	3	5,861	1,860
Jul-13	3	5,978	1,882
Aug-13	3	7,462	2,330
Sep-13	3	6,230	1,930
Oct-13	3	3,524	1,083
Nov-13	3	5,098	1,555
Dec-13	3	4,956	1,500
Jan-14	3	5,728	1,719
Feb-14	3	6,434	1,915
Mar-14	3	6,120	1,807
Apr-14	3	6,110	1,789
May-14	3	7,952	2,309
Jun-14	3	6,456	1,860
Jul-14	4	6,585	1,882
Aug-14	4	8,220	2,330
Sep-14	4	6,863	1,930
Oct-14	4	3,883	1,083
Nov-14	4	5,617	1,555
Dec-14	4	5,460	1,500
Jan-15	4	6,356	1,719
Feb-15	4	7,093	1,915
Mar-15	4	6,742	1,807
Apr-15	4	6,725	1,789
May-15	4	8,746	2,309
Jun-15	4	7,096	1,860
Jul-15	4	7,232	1,882
Aug-15	4	9,022	2,330
Sep-15	4	7,527	1,930
Oct-15	4	4,255	1,083
Nov-15	4	6,152	1,555
Dec-15	4	5,976	1,500
	Customers	Energy	Avg UPC
2013-F	3	68,476	21,638
2014-F	3	75,428	21,637
2015-F	4	82,922	21,641

**Yukon Electrical Company Limited
2013 - 2015 General Rate Application**

Table A: Billed to Earned Factor

Communities	Earned	Billed	Billed to Earned
	2012	2012	Factor
1	2	3	4
Carmacks	2,488	2,445	1.017
Carcross	1,102	1,088	1.013
Haines Junction	3,822	3,768	1.014
Teslin	2,080	2,036	1.021
Upper Liard	300	293	1.024
Destruction Bay	935	919	1.018
Whitehorse	136,170	133,847	1.017
Beaver Creek	1,068	1,054	1.013
Watson Lake	6,713	6,604	1.017
Old Crow	903	887	1.017
Keno City	126	126	1.003
Stewart Crossing	270	264	1.021
Lower Post B.C.	274	268	1.019
Ross River	1,400	1,377	1.017
Pelly Crossing	1,046	1,024	1.021
Swift River	188	184	1.019
Tagish	237	232	1.021
Marsh Lake	351	344	1.020
Deep Creek	43	43	1.002
Minto Landing	48	47	1.018
TOTAL GENERAL SERVICE	159,562	156,851	

Whitehorse Heating Degree Data

Degree Days Below 18.0 °C

MONTH	1993	1994	1995	1996	1997	1998	1999	2000	2001	2002	2003	2004	2005	2006	2007	2008	2009	2010	2011	2012	HDD (1993-12)
JAN	1,119.6	1,085.4	1,020.1	1,556.4	1,185.7	1,165.7	1,183.1	1,082.9	722.7	935.6	989.1	1,257.9	1,165.8	1,096.2	912.0	1,113.8	1,137.9	991.1	1,010.2	1,118.1	1,092.5
FEB	841.7	1,124.5	840.1	835.8	656.5	719.1	976.4	735.2	864.1	824.6	756.6	697.2	795.2	821.3	998.8	954.6	955.4	679.2	905.6	707.5	834.5
MAR	693.4	653.9	880.0	805.8	855.4	756.6	734.0	659.2	765.3	921.1	834.5	753.5	613.7	906.3	954.2	734.7	868.5	656.0	901.7	756.2	785.2
APR	417.3	430.8	439.9	526.0	484.0	458.6	508.8	515.6	506.8	653.3	514.3	466.6	453.3	519.1	511.9	517.3	515.2	461.2	511.2	450.6	493.1
MAY	244.1	320.9	250.7	357.3	331.1	270.6	391.9	382.0	390.4	361.6	363.7	272.5	256.6	346.9	322.1	307.9	331.2	292.0	296.2	350.8	322.0
JUN	132.5	166.2	139.0	193.6	148.9	119.5	153.9	172.5	167.3	175.6	192.8	83.7	154.4	173.1	140.5	225.6	144.1	171.9	161.0	200.0	160.8
JUL	96.8	83.7	96.6	124.9	92.8	111.6	108.6	142.1	139.6	130.9	84.4	74.2	132.6	118.4	102.3	173.4	62.5	117.3	127.8	140.1	113.0
AUG	158.0	69.6	198.3	227.3	130.0	189.2	145.7	219.9	139.6	182.8	180.6	101.7	150.8	201.6	154.2	187.7	158.3	146.2	217.9	157.9	165.9
SEP	279.2	334.9	226.5	362.6	282.1	327.8	311.2	354.2	309.0	314.4	359.2	367.5	299.3	295.7	308.4	318.7	306.1	332.4	328.5	287.2	315.2
OCT	478.7	507.0	524.9	679.9	641.0	557.7	499.8	539.2	573.4	444.3	466.7	540.5	534.6	520.5	543.7	563.0	541.8	520.4	513.3	631.4	541.1
NOV	732.2	935.9	894.4	975.0	694.0	792.3	792.5	691.2	818.0	582.6	874.6	719.8	762.6	1,162.2	724.6	782.5	781.5	717.6	936.3	969.6	817.0
DEC	825.6	1,028.9	1,048.6	1,155.8	762.0	1,051.8	844.0	977.8	1,094.6	845.2	911.6	899.5	794.4	824.3	1,069.5	1,186.2	943.4	1,162.5	775.1	1,196.8	969.9
TOTAL	6,019.1	6,741.7	6,559.1	7,800.4	6,263.5	6,520.5	6,649.9	6,471.8	6,490.8	6,372.0	6,528.1	6,234.6	6,113.3	6,985.6	6,742.2	7,065.4	6,745.9	6,247.8	6,684.8	6,966.2	6,610.1

Commercial Regression Results

Commercial (Whitehorse+Takini)

SUMMARY OUTPUT

Regression Statistics	
Multiple R	0.77977
R Square	0.60804
Adjusted R Square	0.60584
Standard Error	379.854
Observations	180

ANOVA

	df	SS	MS	F	Significance F
Regression	1	4E+07	4E+07	276.129	4.8E-38
Residual	178	2.6E+07	144289		
Total	179	6.6E+07			

	Coefficient	Standard Error	t Stat	P-value	Lower 95%	Upper 95%	Lower 95.0%	Upper 95.0%
Intercept	4662.8	55.0	84.8	0.0	4554.3	4771.2	4554.3	4771.2
WH-HDD	1.42567	0.08579	16.61713	0.00000	1.25636	1.59497	1.25636	1.59497

Yukon Electrical Company Limited (YECL)
Whitehorse Residential Monthly Bill Calculations - Rate 1160
for 1000 kW.h Monthly Consumption

UCG-YECL-5(b)
 REVISED

COMPONENT		01-Jan-08	01-Jan-09	01-Jan-10	01-Jan-11	01-Jan-12	01-Jan-13	01-Jan-14	01-Jan-15	01-Jan-16
ENERGY:	kW.h	1000	1000	1000	1000	1000	1000	1000	1000	1000
CUSTOMER CHARGE	\$ / month	\$ 11.90	\$ 11.90	\$ 11.90	\$ 11.90	\$ 14.65	\$ 14.65	\$ 14.65	\$ 14.65	\$ 14.65
ENERGY CHARGE (1st Block 0-1000 kWh)	¢ / kW.h	9.86	9.86	9.86	9.86	12.14	12.14	12.14	12.14	12.14
ENERGY CHARGE (2nd Block 1001-2500 kWh)		10.45	10.45	10.45	10.45	12.82	12.82	12.82	12.82	12.82
RIDER F - FUEL ADJUSTMENT RIDER	¢ / kW.h	0.9638	1.860	-0.354	-0.090	0.352	0.191	0.191	0.191	0.191
APPEAL RIDER	%									
YEC SHORTFALL	%	14.930%	11.450%	12.460%	12.460%					
RIDER J - YEC SHORTFALL 2012	%						6.40%	11.01%	11.01%	11.01%
RIDER R1 - YEC SHORTFALL 2013	%						3.750%	3.620%	0.000%	0.000%
YECL SHORTFALL	%		5.0%	10.526%	10.526%					
RIDER R - YECL SHORTFALL (13-15)	%							6.5%	12.1%	12.1%
YECL SHORTFALL ADJUSTMENT (13-15)	%								6.7%	0.0%
RATE STABILITY FUND (CUSTOMER)	%	-9.975%	-9.975%	Replaced by Interim Electrical Rebate						
RATE STABILITY FUND (1ST ENERGY BLOCK)	%	-17.6279%	-17.6279%							
RATE STABILITY FUND (2ND ENERGY BLOCK)	%									
INTERIM ELECTRICAL REBATE (up to 1000 kWh)	¢ / kW.h			-2.661	-2.661	-2.661	-2.661	-2.661	-2.661	-2.661
YUKON RELIEF/INCOME TAX REBATE	%	-0.500%	-0.500%	-0.500%	-0.500%	-0.750%	-0.750%	-0.750%	-0.750%	-0.750%
CUSTOMER CHARGE	\$	11.90	11.90	11.90	11.90	14.65	14.65	14.65	14.65	14.65
ENERGY CHARGE 1st Block	\$	98.60	98.60	98.60	98.60	121.40	121.40	121.40	121.40	121.40
ENERGY CHARGE 2nd Block	\$	-	-	-	-	-	-	-	-	-
BASE RATE	\$	110.50	110.50	110.50	110.50	136.05	136.05	136.05	136.05	136.05
RIDER F - FUEL ADJUSTMENT RIDER	\$	9.64	18.60	(3.54)	(0.90)	3.52	1.91	1.91	1.91	1.91
APPEAL RIDER	\$	-	-	-	-	-	-	-	-	-
YEC SHORTFALL	\$	16.50	12.65	13.77	13.77	-	-	-	-	-
RIDER J - YEC SHORTFALL 2012	\$	-	-	-	-	-	8.71	14.98	14.98	14.98
RIDER R1 - YEC SHORTFALL 2013	\$	-	-	-	-	-	5.10	4.93	-	-
YECL SHORTFALL	\$	-	5.53	11.63	11.63	-	-	-	-	-
RIDER R - YECL SHORTFALL (13-15)	\$	-	-	-	-	-	-	8.84	16.46	16.46
YECL SHORTFALL ADJUSTMENT (13-15)	\$	-	-	-	-	-	-	-	9.05	-
TOTAL (BEFORE RATE RELIEF AND GST)	\$	136.64	147.28	132.36	135.00	139.57	151.77	166.71	178.45	169.40
% Change M over M (Before Relief)			7.8%	-10.1%	2.0%	3.4%	8.7%	9.8%	7.0%	-5.1%
RATE STABILITY FUND (CUSTOMER)	\$	(1.19)	(1.19)	-	-	-	-	-	-	-
RATE STABILITY FUND (1ST ENERGY BLOCK)	\$	(17.38)	(17.38)	-	-	-	-	-	-	-
RATE STABILITY FUND (2ND ENERGY BLOCK)	\$	-	-	(26.61)	(26.61)	(26.61)	(26.61)	(26.61)	(26.61)	(26.61)
INTERIM ELECTRICAL REBATE (up to 1000 kWh)	\$	-	-	(26.61)	(26.61)	(26.61)	(26.61)	(26.61)	(26.61)	(26.61)
YUKON RELIEF/INCOME TAX REBATE	\$	(0.55)	(0.55)	(0.55)	(0.55)	(1.02)	(1.02)	(1.02)	(1.02)	(1.02)
TOTAL RELIEF	\$	(19.12)	(19.12)	(27.16)	(27.16)	(27.63)	(27.63)	(27.63)	(27.63)	(27.63)
TOTAL (INCLUDING RATE RELIEF, BEFORE GST)	\$	117.52	128.16	105.20	107.84	111.94	124.14	139.08	150.82	141.77
% Change M over M (Including Relief)			9.1%	-17.9%	2.5%	3.8%	10.9%	12.0%	8.4%	-6.0%

(1) Reflects Rates per Board Order 2013-04 with respect to Yukon Energy's 2012-2013 GRA
 (2) Reflects Rate per Board Order 2013-05 with respect to Yukon Electrical's 2013-2015 GRA
 (3) Collection of remaining 2013 revenue requirement over the period July '14-June '15
 (4) Collection of 2014 revenue requirement over the period July '14-June '15
 (5) Collection of 2015 revenue requirement begins January '15
 (6) Assumes no change in Yukon Government Bill Relief

Yukon Electrical Company Limited (YECL)
Whitehorse Residential Monthly Bill Calculations - Rate 1160
for 1200 kW.h Monthly Consumption

UCG-YECL-5(b)
 REVISED

COMPONENT		01-Jan-08	01-Jan-09	01-Jan-10	01-Jan-11	01-Jan-12	01-Jan-13	01-Jan-14	01-Jan-15	01-Jan-16
ENERGY:	kW.h	1200	1200	1200	1200	1200	1200	1200	1200	1200
CUSTOMER CHARGE	\$ / month	\$ 11.90	\$ 11.90	\$ 11.90	\$ 11.90	\$ 14.65	\$ 14.65	\$ 14.65	\$ 14.65	\$ 14.65
ENERGY CHARGE (1st Block 0-1000 kWh)	¢ / kW.h	9.86	9.86	9.86	9.86	12.14	12.14	12.14	12.14	12.14
ENERGY CHARGE (2nd Block 1001-2500 kWh)		10.45	10.45	10.45	10.45	12.82	12.82	12.82	12.82	12.82
RIDER F - FUEL ADJUSTMENT RIDER	¢ / kW.h	0.9638	1.860	-0.354	-0.090	0.352	0.191	0.191	0.191	0.191
APPEAL RIDER	%									
YEC SHORTFALL	%	14.930%	11.450%	12.460%	12.460%					
RIDER J - YEC SHORTFALL 2012	%						6.40%	11.01%	11.01%	11.01%
RIDER R1 - YEC SHORTFALL 2013	%						3.750%	3.620%	0.000%	0.000%
YECL SHORTFALL	%		5.0%	10.526%	10.526%					
RIDER R - YECL SHORTFALL (13-15)	%							6.5%	12.1%	12.1%
YECL SHORTFALL ADJUSTMENT (13-15)	%								6.7%	0.0%
RATE STABILITY FUND (CUSTOMER)	%	-9.975%	-9.975%	Replaced by Interim Electrical Rebate						
RATE STABILITY FUND (1ST ENERGY BLOCK)	%	-17.6279%	-17.6279%							
RATE STABILITY FUND (2ND ENERGY BLOCK)	%									
INTERIM ELECTRICAL REBATE (up to 1000 kWh)	¢ / kW.h			-2.661	-2.661	-2.661	-2.661	-2.661	-2.661	-2.661
YUKON RELIEF/INCOME TAX REBATE	%	-0.500%	-0.500%	-0.500%	-0.500%	-0.750%	-0.750%	-0.750%	-0.750%	-0.750%
CUSTOMER CHARGE	\$	11.90	11.90	11.90	11.90	14.65	14.65	14.65	14.65	14.65
ENERGY CHARGE 1st Block	\$	98.60	98.60	98.60	98.60	121.40	121.40	121.40	121.40	121.40
ENERGY CHARGE 2nd Block	\$	20.90	20.90	20.90	20.90	25.64	25.64	25.64	25.64	25.64
BASE RATE	\$	131.40	131.40	131.40	131.40	161.69	161.69	161.69	161.69	161.69
RIDER F - FUEL ADJUSTMENT RIDER	\$	11.57	22.32	(4.25)	(1.08)	4.22	2.29	2.29	2.29	2.29
APPEAL RIDER	\$									
YEC SHORTFALL	\$	19.62	15.05	16.37	16.37	-	-	-	-	-
RIDER J - YEC SHORTFALL 2012	\$	-	-	-	-	-	10.35	17.80	17.80	17.80
RIDER R1 - YEC SHORTFALL 2013	\$	-	-	-	-	-	6.06	5.85	-	-
YECL SHORTFALL	\$	-	6.57	13.83	13.83	-	-	-	-	-
RIDER R - YECL SHORTFALL (13-15)	\$	-	-	-	-	-	-	10.51	19.56	19.56
YECL SHORTFALL ADJUSTMENT (13-15)	\$	-	-	-	-	-	-	-	10.75	-
TOTAL (BEFORE RATE RELIEF AND GST)	\$	162.59	175.34	157.35	160.52	165.91	180.39	198.14	212.09	201.34
% Change M over M (Before Relief)			7.8%	-10.3%	2.0%	3.4%	8.7%	9.8%	7.0%	-5.1%
RATE STABILITY FUND (CUSTOMER)	\$	(1.19)	(1.19)	-	-	-	-	-	-	-
RATE STABILITY FUND (1ST ENERGY BLOCK)	\$	(17.38)	(17.38)	-	-	-	-	-	-	-
RATE STABILITY FUND (2ND ENERGY BLOCK)	\$	-	-	(26.61)	(26.61)	(26.61)	(26.61)	(26.61)	(26.61)	(26.61)
INTERIM ELECTRICAL REBATE (up to 1000 kWh)	\$	-	-	(26.61)	(26.61)	(26.61)	(26.61)	(26.61)	(26.61)	(26.61)
YUKON RELIEF/INCOME TAX REBATE	\$	(0.66)	(0.66)	(0.66)	(0.66)	(1.21)	(1.21)	(1.21)	(1.21)	(1.21)
TOTAL RELIEF	\$	(19.23)	(19.23)	(27.27)	(27.27)	(27.82)	(27.82)	(27.82)	(27.82)	(27.82)
TOTAL (INCLUDING RATE RELIEF, BEFORE GST)	\$	143.36	156.11	130.08	133.25	138.09	152.57	170.32	184.27	173.52
% Change M over M (Including Relief)			8.9%	-16.7%	2.4%	3.6%	10.5%	11.6%	8.2%	-5.8%

- (1) Reflects Rates per Board Order 2013-04 with respect to Yukon Energy's 2012-2013 GRA
- (2) Reflects Rate per Board Order 2013-05 with respect to Yukon Electrical's 2013-2015 GRA
- (3) Collection of remaining 2013 revenue requirement over the period July '14-June '15
- (4) Collection of 2014 revenue requirement over the period July '14-June '15
- (5) Collection of 2015 revenue requirement begins January '15
- (6) Assumes no change in Yukon Government Bill Relief

Yukon Electrical Company Limited (YECL)
Whitehorse Residential Monthly Bill Calculations - Rate 1160
for 1400 kW.h Monthly Consumption

UCG-YECL-5(b)
 REVISED

COMPONENT		01-Jan-08	01-Jan-09	01-Jan-10	01-Jan-11	01-Jan-12	01-Jan-13	01-Jan-14	01-Jan-15	01-Jan-16
ENERGY:	kW.h	1400	1400	1400	1400	1400	1400	1400	1400	1400
CUSTOMER CHARGE	\$ / month	\$ 11.90	\$ 11.90	\$ 11.90	\$ 11.90	\$ 14.65	\$ 14.65	\$ 14.65	\$ 14.65	\$ 14.65
ENERGY CHARGE (1st Block 0-1000 kWh)	¢ / kW.h	9.86	9.86	9.86	9.86	12.14	12.14	12.14	12.14	12.14
ENERGY CHARGE (2nd Block 1001-2500 kWh)		10.45	10.45	10.45	10.45	12.82	12.82	12.82	12.82	12.82
RIDER F - FUEL ADJUSTMENT RIDER	¢ / kW.h	0.9638	1.860	-0.354	-0.090	0.352	0.191	0.191	0.191	0.191
APPEAL RIDER	%									
YEC SHORTFALL	%	14.930%	11.450%	12.460%	12.460%					
RIDER J - YEC SHORTFALL 2012	%						6.40%	11.01%	11.01%	11.01%
RIDER R1 - YEC SHORTFALL 2013	%						3.750%	3.620%	0.000%	0.000%
YECL SHORTFALL	%		5.0%	10.526%	10.526%					
RIDER R - YECL SHORTFALL (13-15)	%							6.5%	12.1%	12.1%
YECL SHORTFALL ADJUSTMENT (13-15)	%								6.7%	0.0%
RATE STABILITY FUND (CUSTOMER)	%	-9.975%	-9.975%	Replaced by Interim Electrical Rebate						
RATE STABILITY FUND (1ST ENERGY BLOCK)	%	-17.6279%	-17.6279%							
RATE STABILITY FUND (2ND ENERGY BLOCK)	%									
INTERIM ELECTRICAL REBATE (up to 1000 kWh)	¢ / kW.h			-2.661	-2.661	-2.661	-2.661	-2.661	-2.661	-2.661
YUKON RELIEF/INCOME TAX REBATE	%	-0.500%	-0.500%	-0.500%	-0.500%	-0.750%	-0.750%	-0.750%	-0.750%	-0.750%
CUSTOMER CHARGE	\$	11.90	11.90	11.90	11.90	14.65	14.65	14.65	14.65	14.65
ENERGY CHARGE 1st Block	\$	98.60	98.60	98.60	98.60	121.40	121.40	121.40	121.40	121.40
ENERGY CHARGE 2nd Block	\$	41.80	41.80	41.80	41.80	51.28	51.28	51.28	51.28	51.28
BASE RATE	\$	152.30	152.30	152.30	152.30	187.33	187.33	187.33	187.33	187.33
RIDER F - FUEL ADJUSTMENT RIDER	\$	13.49	26.04	(4.96)	(1.26)	4.93	2.67	2.67	2.67	2.67
APPEAL RIDER	\$									
YEC SHORTFALL	\$	22.74	17.44	18.98	18.98	-	-	-	-	-
RIDER J - YEC SHORTFALL 2012	\$	-	-	-	-	-	11.99	20.63	20.63	20.63
RIDER R1 - YEC SHORTFALL 2013	\$	-	-	-	-	-	7.02	6.78	-	-
YECL SHORTFALL	\$	-	7.62	16.03	16.03	-	-	-	-	-
RIDER R - YECL SHORTFALL (13-15)	\$	-	-	-	-	-	-	12.18	22.67	22.67
YECL SHORTFALL ADJUSTMENT (13-15)	\$	-	-	-	-	-	-	-	12.46	-
TOTAL (BEFORE RATE RELIEF AND GST)	\$	188.53	203.40	182.35	186.05	192.26	209.01	229.59	245.76	233.30
% Change M over M (Before Relief)			7.9%	-10.3%	2.0%	3.3%	8.7%	9.8%	7.0%	-5.1%
RATE STABILITY FUND (CUSTOMER)	\$	(1.19)	(1.19)	-	-	-	-	-	-	-
RATE STABILITY FUND (1ST ENERGY BLOCK)	\$	(17.38)	(17.38)	-	-	-	-	-	-	-
RATE STABILITY FUND (2ND ENERGY BLOCK)	\$	-	-	(26.61)	(26.61)	(26.61)	(26.61)	(26.61)	(26.61)	(26.61)
INTERIM ELECTRICAL REBATE (up to 1000 kWh)	\$	-	-	(26.61)	(26.61)	(26.61)	(26.61)	(26.61)	(26.61)	(26.61)
YUKON RELIEF/INCOME TAX REBATE	\$	(0.76)	(0.76)	(0.76)	(0.76)	(1.40)	(1.40)	(1.40)	(1.40)	(1.40)
TOTAL RELIEF	\$	(19.33)	(19.33)	(27.37)	(27.37)	(28.01)	(28.01)	(28.01)	(28.01)	(28.01)
TOTAL (INCLUDING RATE RELIEF, BEFORE GST)	\$	169.20	184.07	154.98	158.68	164.25	181.00	201.58	217.75	205.29
% Change M over M (Including Relief)			8.8%	-15.8%	2.4%	3.5%	10.2%	11.4%	8.0%	-5.7%

- (1) Reflects Rates per Board Order 2013-04 with respect to Yukon Energy's 2012-2013 GRA
- (2) Reflects Rate per Board Order 2013-05 with respect to Yukon Electrical's 2013-2015 GRA
- (3) Collection of remaining 2013 revenue requirement over the period July '14-June '15
- (4) Collection of 2014 revenue requirement over the period July '14-June '15
- (5) Collection of 2015 revenue requirement begins January '15
- (6) Assumes no change in Yukon Government Bill Relief

**Yukon Electrical Company Limited (YECL)
Sales (MWh) Variance by Rate Zone**

Hydro Rate Zone

2008	08/09 GRA			
	Forecast MWh	Actual MWh	Var MWh	Var%
Residential	116,772	118,407	1,634	1.4%
Commercial	133,594	131,258	-2,335	-1.7%
Total	250,366	249,665	-701	-0.3%

2009	08/09 GRA			
	Forecast MWh	Actual MWh	Var MWh	Var%
Residential	119,951	121,938	1,986	1.7%
Commercial	134,812	132,624	-2,188	-1.6%
Total	254,763	254,561	-202	-0.1%

Large Diesel Rate Zone

2008	08/09 GRA			
	Forecast MWh	Actual MWh	Var MWh	Var%
Residential	6,318	6,493	174	2.8%
Commercial	7,246	6,597	-650	-9.0%
Total	13,565	13,090	-475	-3.5%

2009	08/09 GRA			
	Forecast MWh	Actual MWh	Var MWh	Var%
Residential	6,340	6,445	105	1.7%
Commercial	7,377	6,562	-815	-11.0%
Total	13,717	13,006	-710	-5.2%

Small Diesel Rate Zone

2008	08/09 GRA			
	Forecast MWh	Actual MWh	Var MWh	Var%
Residential	2,378	2,475	96	4.1%
Commercial	3,065	3,084	18	0.6%
Total	5,444	5,559	115	2.1%

2009	08/09 GRA			
	Forecast MWh	Actual MWh	Var MWh	Var%
Residential	1,329	1,212	-117	-8.8%
Commercial	2,382	2,119	-263	-11.1%
Total	3,712	3,331	-381	-10.3%

Old Crow Rate Zone

2008	08/09 GRA			
	Forecast MWh	Actual MWh	Var MWh	Var%
Residential	972	928	-44	-4.5%
Commercial	795	765	-31	-3.9%
Total	1,767	1,692	-75	-4.2%

2009	08/09 GRA			
	Forecast MWh	Actual MWh	Var MWh	Var%
Residential	995	975	-20	-2.0%
Commercial	794	772	-22	-2.8%
Total	1,788	1,747	-41	-2.3%

Total

2008	08/09 GRA			
	Forecast MWh	Actual MWh	Var MWh	Var%
Residential	126,441	128,302	1,861	1.5%
Commercial	144,701	141,704	-2,997	-2.1%
Lighting	4,082	4,176	94	2.3%
Total	275,224	274,182	-1,042	-0.4%

2009	08/09 GRA			
	Forecast MWh	Actual MWh	Var MWh	Var%
Residential	128,615	130,569	1,954	1.5%
Commercial	145,365	142,077	-3,289	-2.3%
Lighting	4,153	4,069	-84	-2.0%
Total	278,133	276,714	-1,419	-0.5%